



Spencer Rise, NW5

£3,750 Per calendar month

A characterful bay-fronted three double bedroom Victorian house with a double reception room, high ceilings, sash windows, wood flooring and a private garden, ideal for a family.

Dartmouth Park is well-located for Tufnell Park and Kentish Town, with access to local boutiques, bars, restaurants, good quality schools, Hampstead Heath and a variety of transport links.

Features

- Victorian House
- Period Features
- Three Double Bedrooms
- Kitchen/Diner
- Private 25ft Garden
- Desirable Location

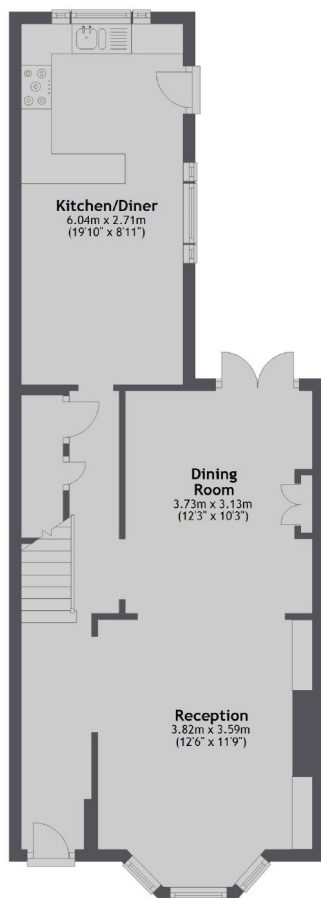


Spencer Rise, NW5

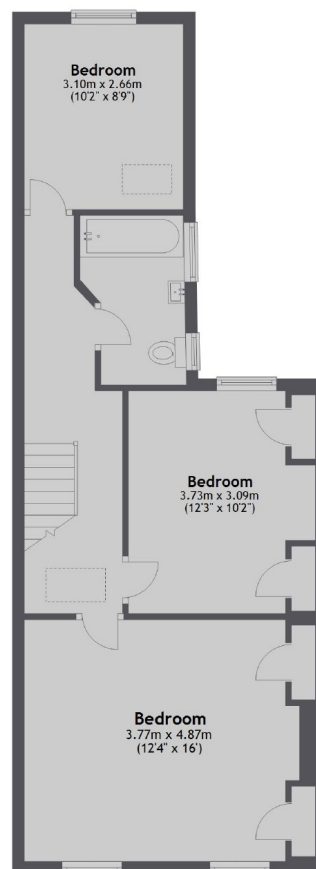


Spencer Rise, London, NW5

Ground Floor



First Floor



Total area: approx. 108.4 sq. metres (1166.6 sq. feet)

Dexters

Highgate
35A Highgate High Street
London
N6 5JT
Lettings
020 8545 8585

Energy Rating: E. We aim to make our particulars both accurate and reliable. However they are not guaranteed; nor do they form part of an offer or contract. If you require clarification on any points then please contact us, especially if you're traveling some distance to view. Please note that appliances and heating systems have not been tested and therefore no warranties can be given as to their good working order.

 **RICS** | Regulated
Estate Agent
and Letting Agent

[dexters.co.uk](https://www.dexters.co.uk)