



Gresley Road, N19

£5,000 Per calendar month

Dexters



Gresley Road, N19

An impressive Victorian home located in the Whitehall Park Conservation Area. The house consists of four bedrooms, two bathrooms and a guest WC spread over three floors with period features, and a rear garden.

The ground floor boasts a contemporary kitchen complete with high-spec appliances, flowing into a bright and welcoming family dining area, you will also find a guest WC on the ground floor.

To the rear, a beautifully presented living room features wooden flooring, a cosy log burner, and bi-folding doors that open onto a private garden.

Upstairs, you'll find four generously sized double bedrooms, including a luxurious principal bedroom with an en suite bathroom.

Whitehall Park is well-situated for access to Highgate Village, Crouch End and Archway, with a variety of local shops, cafés and transport links.

Features

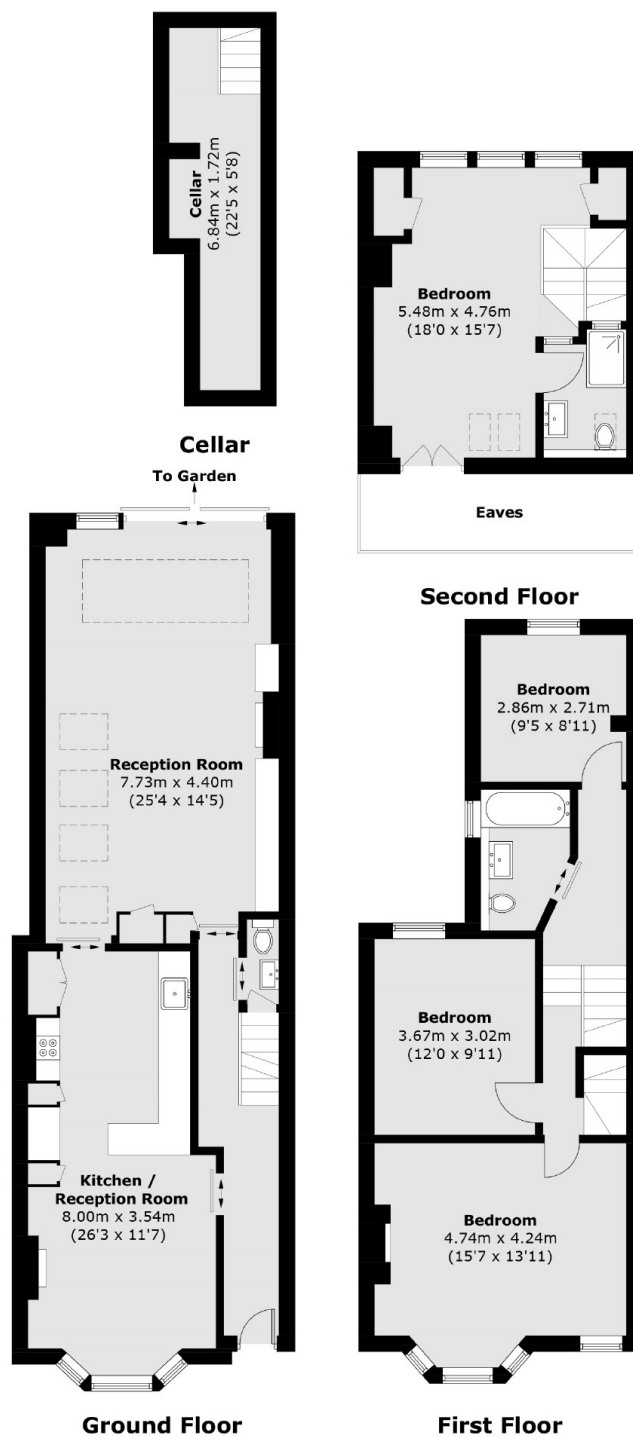
- Period House
- Four Bedrooms
- Two Bathrooms & WC
- Three Floors
- Private Garden
- Wooden Floors Throughout







Gresley Road, London, N19



Total area (approx.): 159.9 sq. m (1,721.2 sq. ft)
(Excluding Eaves / Including Cellar)

Dexters

Highgate
35A Highgate High Street
London
N6 5JT
Lettings
020 8545 8585

Energy Rating: C. We aim to make our particulars both accurate and reliable. However they are not guaranteed; nor do they form part of an offer or contract. If you require clarification on any points then please contact us, especially if you're traveling some distance to view. Please note that appliances and heating systems have not been tested and therefore no warranties can be given as to their good working order.

 **RICS** | Regulated
Estate Agent
and Letting Agent

dexters.co.uk