



## Southwood Lane, N6

### £900,000

A superb and well-proportioned two double bedroom apartment set on the lower ground floor of an attractive red-brick Edwardian mansion block with its own private entrance and paved patio leading to communal gardens.

Conveniently located moments from Highgate tube and the local woodlands, the amenities of Highgate Village can be found at the end of Southwood Lane.

### Features

- Two Double Bedrooms
- Separate Kitchen
- Reception Room
- Two Bathrooms
- Patio/Communal Gardens
- Own Private Entrance





## Southwood Lane, N6

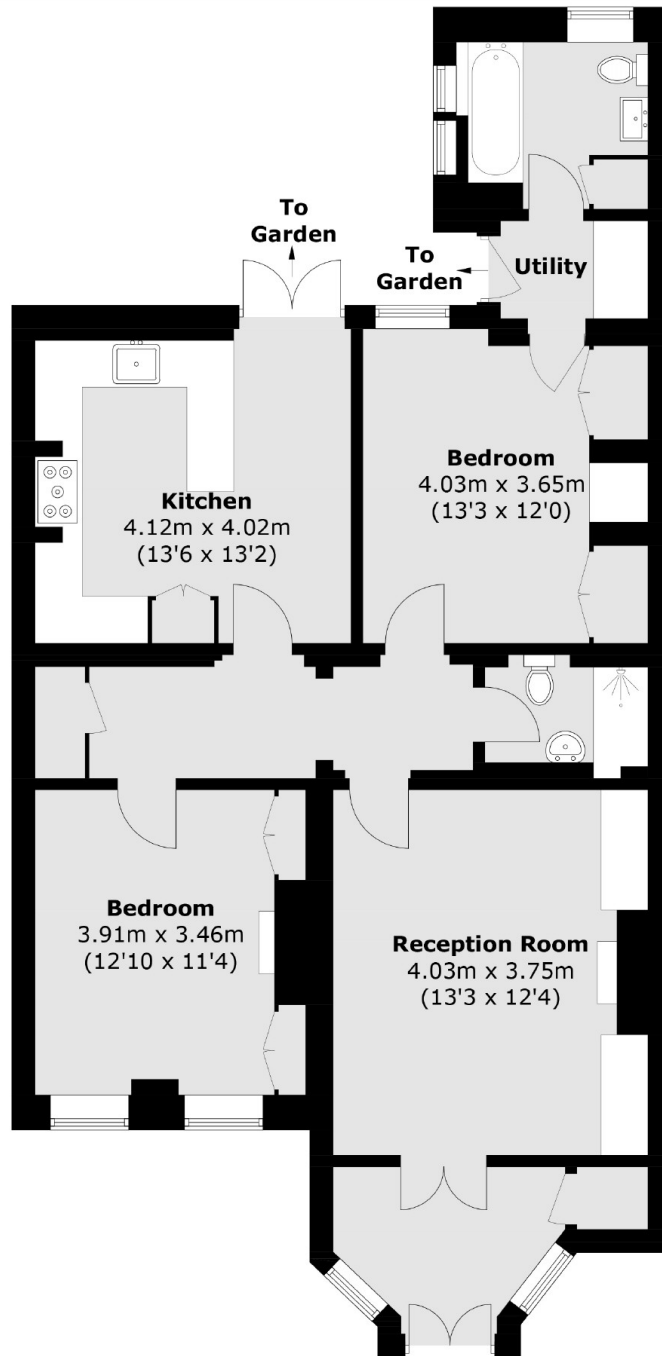
Retaining a host of period features, including high ceilings, sash windows, fireplaces and wood flooring. The property comes complete with a separate modern eat-in kitchen and two stylish bathrooms.







# Southwood Lane, London, N6



## Lower Ground Floor

Total area (approx.): 94.7 sq. m (1019.3 sq. ft)

**Dexters**

Highgate  
35A Highgate High Street  
London  
N6 5JT  
Sales  
020 8545 8584

Energy Rating: C. We aim to make our particulars both accurate and reliable. However they are not guaranteed; nor do they form part of an offer or contract. If you require clarification on any points then please contact us, especially if you're traveling some distance to view. Please note that appliances and heating systems have not been tested and therefore no warranties can be given as to their good working order.

 **RICS** | Regulated  
Estate Agent  
and Letting Agent

[dexters.co.uk](https://www.dexters.co.uk)