



Cromwell Avenue, N6

£650,000

A well-presented first floor conversion with an amazing kitchen with granite work surfaces open plan to a spacious reception room with wooden floors and large sash windows.

Placed midway along this popular tree lined avenue, there is access to excellent transport connections and to the village with its shops and café society along with the open spaces of Waterlow Park.

Features

Two Bedrooms
Open Plan Reception
Fitted Kitchen
Modern Bathroom
Central Location
Period Detail

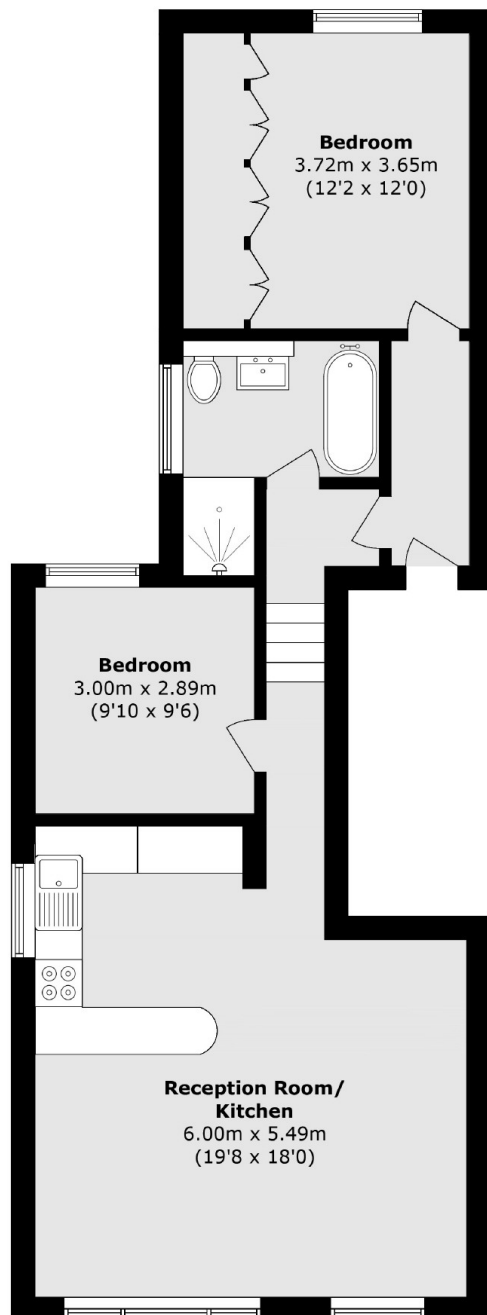


Cromwell Avenue, N6

This delightful Victorian property has a welcoming communal entrance which leads to the first floor apartment and retains a number of period details, enhanced by a stand out fitted kitchen and modern bathroom with additional shower.



Cromwell Avenue, London, N6



Total area (approx.): 66.7 sq. m (717.9 sq. ft)

Dexters

Highgate
35A Highgate High Street
London
N6 5JT
Sales
020 8545 8584

Energy Rating: D. We aim to make our particulars both accurate and reliable. However they are not guaranteed; nor do they form part of an offer or contract. If you require clarification on any points then please contact us, especially if you're traveling some distance to view. Please note that appliances and heating systems have not been tested and therefore no warranties can be given as to their good working order.

 **RICS** | Regulated
Estate Agent
and Letting Agent

[dexters.co.uk](https://www.dexters.co.uk)