



## Junction Road, N19

£1,950 Per calendar month

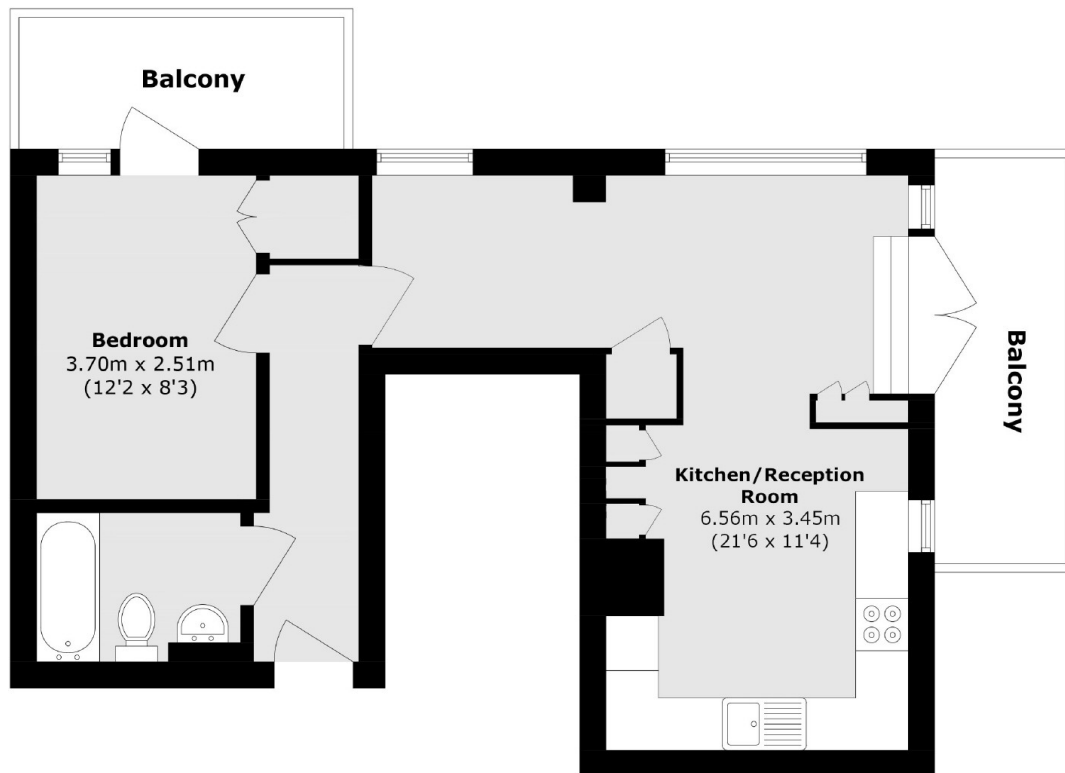
A spacious one double bedroom apartment with Juliet balconies and lift access on the third floor of a modern development.

Junction Road is ideally located for Tufnell Park tube with a choice of transport links and local amenities on Fortress Road.

### Features

- One Double Bedroom
- Semi Open Plan Kitchen
- Modern Development
- Private Balcony
- Lift Access
- Great Location

# Junction Road, London, N19



Total area (approx.): 48.6 sq. m (523.1 sq. ft)

Balcony area (approx.): 12.5 sq. m (134.5 sq. ft)