



Crescent Road, N8

£450,000

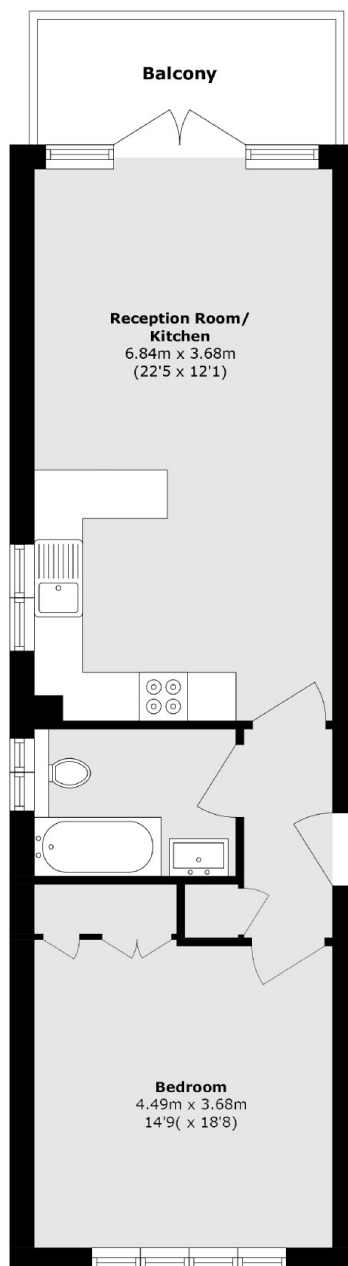
A spacious and well-presented, double bedroom flat set within a small purpose built block, moments from The Broadway. The property benefits from a large balcony and communal garden.

Conveniently located for the shops, cafés and restaurants in Crouch End. The flat is close to local bus links and less than a mile from Crouch Hill station and Highgate underground station.

Features

- Open Plan Living
- Rear Facing Balcony
- Communal Garden
- Bicycle Storage
- Parking Available
- Close to Broadway

Crescent Road, London, N8



Total area (approx.): 49.0 sq. m (527.4 sq. ft)

Balcony area (approx.): 5.7 sq. m (61.3 sq. ft)

Dexters

Highgate
35A Highgate High Street
London
N6 5JT
Sales
020 8545 8584

Energy Rating: B. We aim to make our particulars both accurate and reliable. However they are not guaranteed; nor do they form part of an offer or contract. If you require clarification on any points then please contact us, especially if you're traveling some distance to view. Please note that appliances and heating systems have not been tested and therefore no warranties can be given as to their good working order.

 **RICS** | Regulated
Estate Agent
and Letting Agent

[dexters.co.uk](https://www.dexters.co.uk)