



Hillside Gardens, N6

£875,000

On the upper floors of a Victorian red-brick building, a beautiful split level conversion providing 843 sq ft of accommodation including a spectacular glazed sun room and roof terrace.

Hillside Gardens is well placed for access to Highgate tube, local woodlands, and the amenities of Highgate Village are at the far end of Southwood Lane.

Features

- Two Bedrooms
- Reception/Kitchen
- En Suite Bathroom
- Shower Room
- Roof Terrace
- Close to Tube



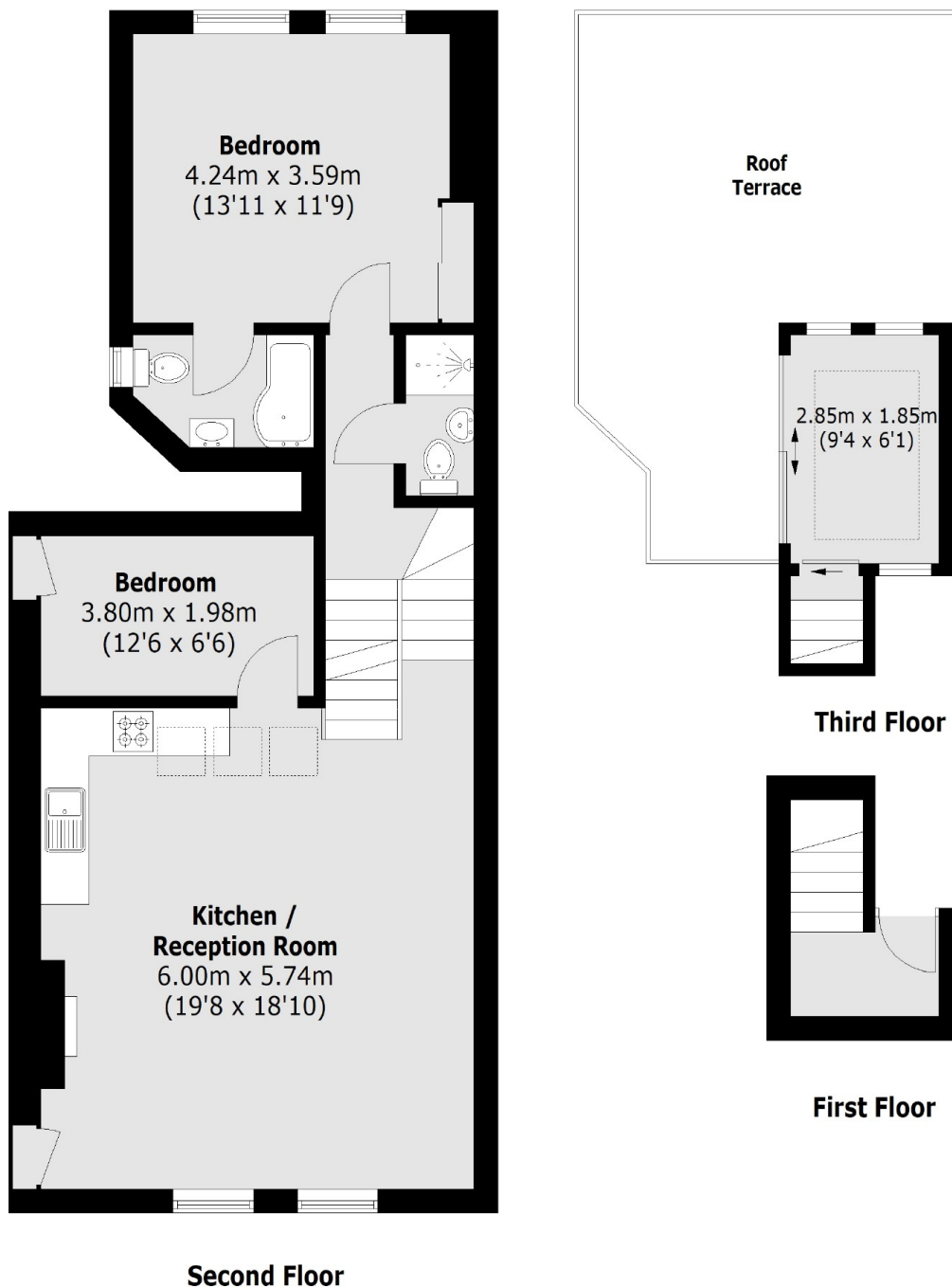
Hillside Gardens, N6

With generous ceiling heights and sash windows, there is an impressive reception room which leads onto a roof top conservatory with private terrace.

The flat has the added benefit of an en suite bathroom to the main bedroom and a separate shower room for the second bedroom/study. The property is well presented and neutrally decorated making it ready to move into.



Hillside Gardens, London, N6



Total area (approx.): 78.3 sq. m (842.8 Sq. ft)
Roof Terrace: 25.1 sq. m (270.9 Sq. ft)

Dexters

Highgate
35A Highgate High Street
London
N6 5JT
Sales
020 8545 8584

Energy Rating: D. We aim to make our particulars both accurate and reliable. However they are not guaranteed; nor do they form part of an offer or contract. If you require clarification on any points then please contact us, especially if you're traveling some distance to view. Please note that appliances and heating systems have not been tested and therefore no warranties can be given as to their good working order.

RICS | Regulated
Estate Agent
and Letting Agent

[dexters.co.uk](https://www.dexters.co.uk)