



Holly Terrace, N6

£675,000

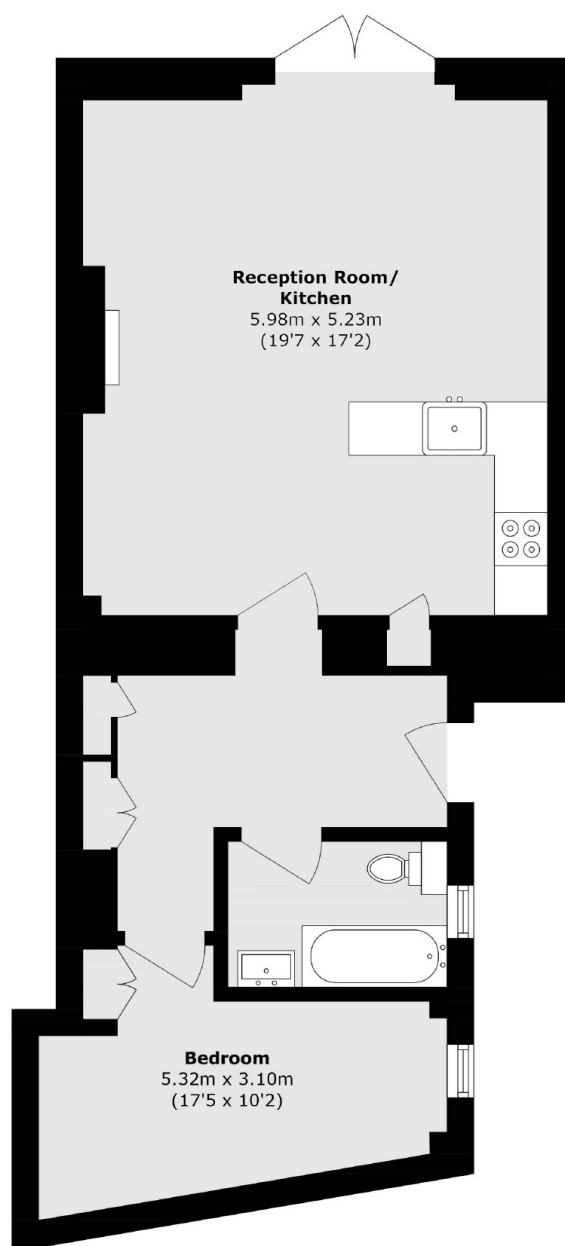
A stylish and newly renovated ground floor, one bedroom apartment forming part of a historic Grade II Listed stucco fronted building. This fine property comes complete with a landscaped garden, high ceilings, stunning fireplace and wood flooring.

In this enviable and conveniently location between Highgate Village and the café society of Swains Lane, there are multiple access points onto the open acres of Hampstead Heath and the swimming ponds.

Features

- One Bedroom
- Garden
- High Ceilings
- Newly Refurbished
- Open Plan Kitchen
- Modern Bathroom

Holly Terrace, London, N6



Total area (approx.): 59.2 sq. m (637.2 sq. ft)

Dexters

Highgate
35A Highgate High Street
London
N6 5JT
Sales
020 8545 8584

Energy Rating: TBA. We aim to make our particulars both accurate and reliable. However they are not guaranteed; nor do they form part of an offer or contract. If you require clarification on any points then please contact us, especially if you're traveling some distance to view. Please note that appliances and heating systems have not been tested and therefore no warranties can be given as to their good working order.

 **RICS** | Regulated
Estate Agent
and Letting Agent

[dexters.co.uk](https://www.dexters.co.uk)