



Goddard Place, N19

£2,500 Per calendar month

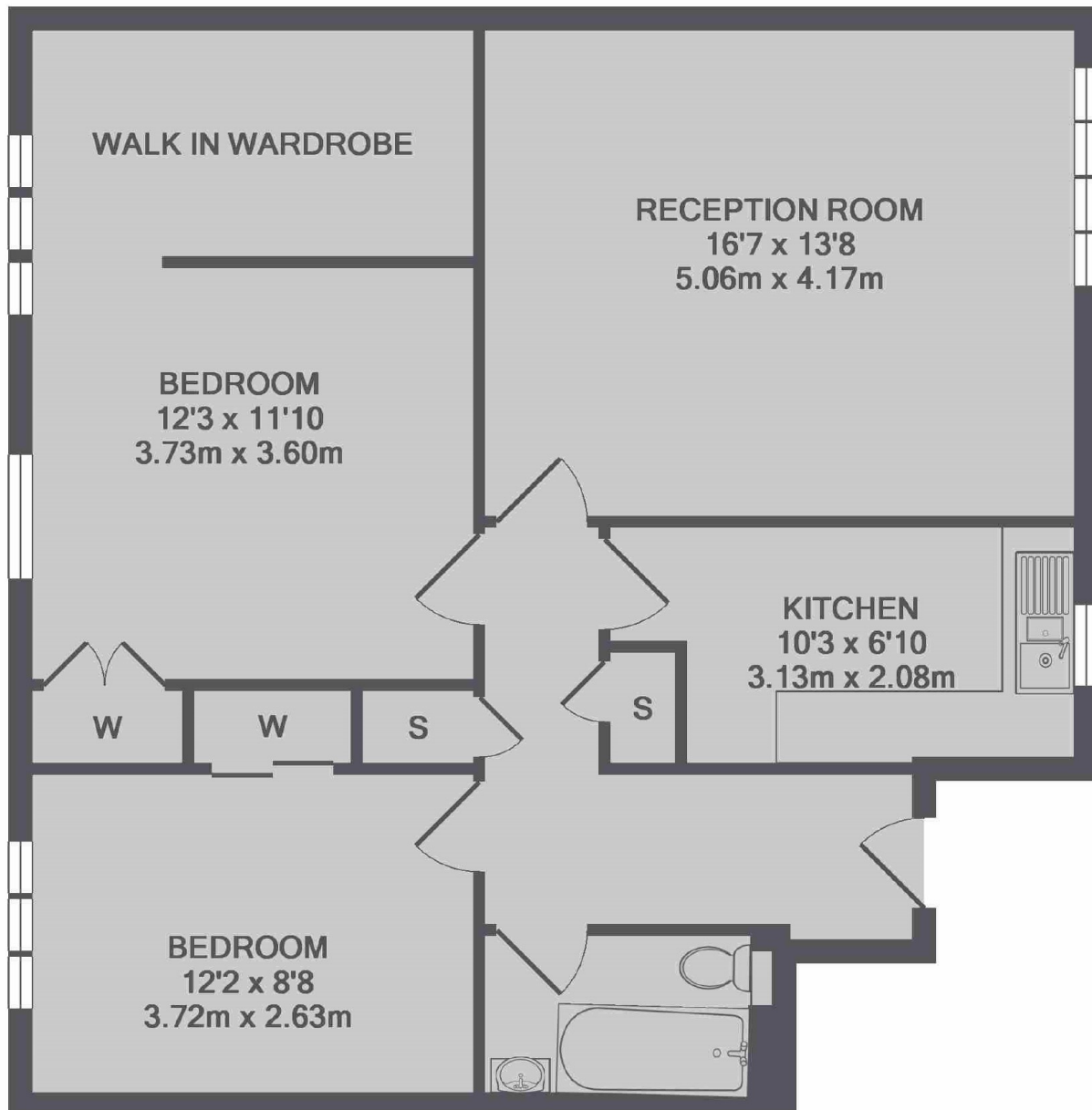
A stylish two double bedroom modern apartment on the top floor of a private gated development with high specification finish and dressing room.

Goddard Place is well situated for local amenities in both Tufnell Park and Archway, as well as good transport links to Kings Cross/Central London.

Features

Top Floor
Modern Apartment
Stylish Interior
Two Double Bedrooms
Dressing Room
Gated Development

Goddard Place,
London, N19



TOTAL APPROX. FLOOR AREA 807 SQ.FT. (74.9 SQ.M.)