



Crescent Road, N8

£550,000

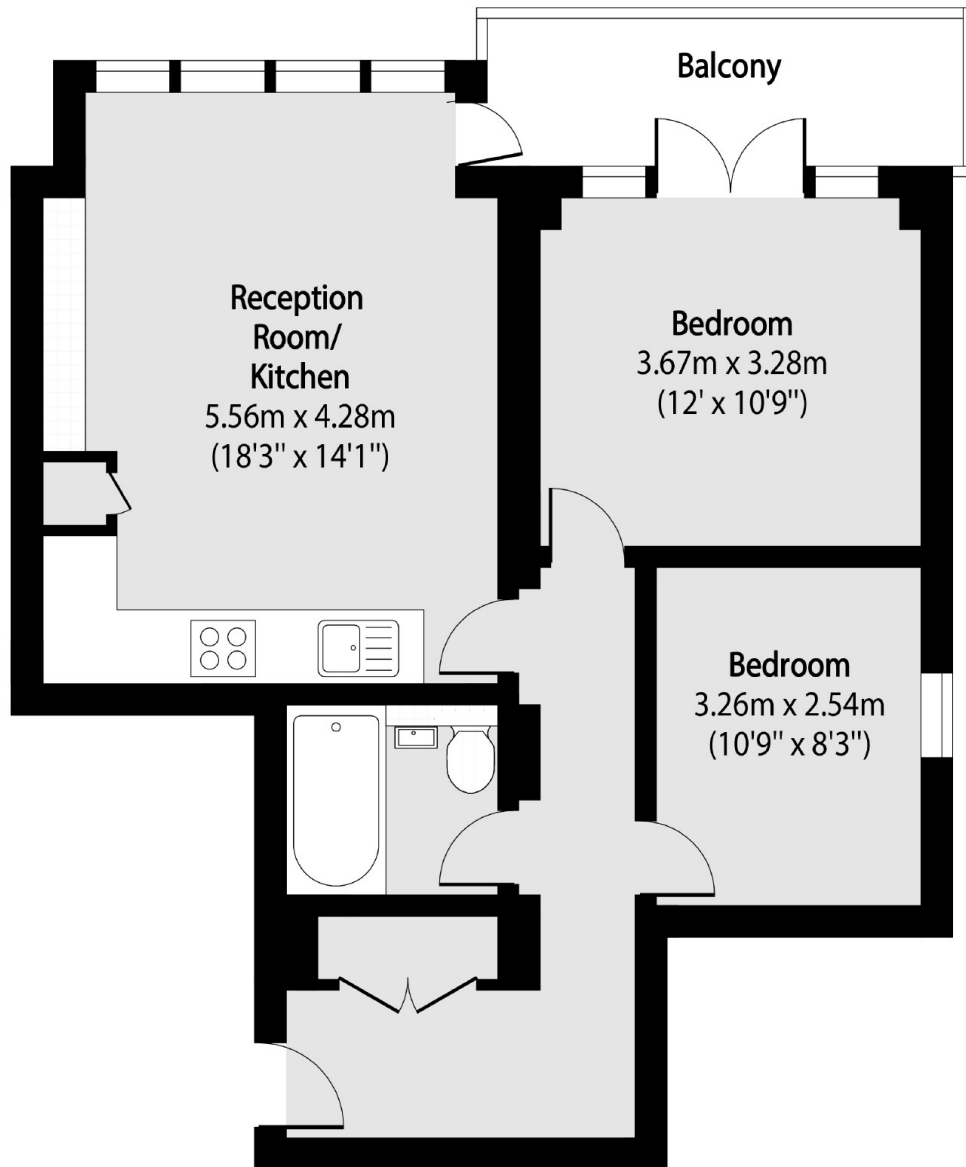
A light filled two double bedroom apartment, situated on the first floor of a small private block. The property offers an open plan kitchen living room, south east facing balcony and communal gardens.

Conveniently located for the shops, cafés and restaurants in Crouch End, as well as the amenities and transport links of both Archway and Highgate, the property has off-street parking on a first come, first served basis and a bike store.

Features

- Two Double Bedrooms
- Open Plan Living
- Private Balcony
- Communal Garden
- Off-Street Parking
- Crouch End Broadway

Crescent Road, London, N8



Total area (approx): 61.48 sq m (662 sq. ft)

Balcony total area (approx): 6.30 sq m (118 sq. ft)

Dexters

Highgate
35A Highgate High Street
London
N6 5JT
Sales
020 8545 8584

Energy Rating: C. We aim to make our particulars both accurate and reliable. However they are not guaranteed; nor do they form part of an offer or contract. If you require clarification on any points then please contact us, especially if you're traveling some distance to view. Please note that appliances and heating systems have not been tested and therefore no warranties can be given as to their good working order.

 **RICS** | Regulated
Estate Agent
and Letting Agent

dexters.co.uk