



Cholmeley Park, N6

£1,850,000

Dexters



Cholmeley Park, N6

An exceptional garden level apartment in this highly sought after Grade II Listed development with a spacious reception room, generously fitted kitchen and its own private gardens.

Within this small boutique and gated development of just 15 apartments, this fine residence benefits from a majestic communal entrance hallway, concierge, leisure complex, gym, secure parking and its own private entrance.

Featuring a spacious reception area, there are two bedrooms, two bathrooms, guest cloakroom and a Bulthaup fitted kitchen.

Furnival House was completely restored circa 2016 as a virtual new build to include all the communal amenities along with the installation of a passenger lift and provides a luxurious secure environment for the residents.

Located towards the summit of Cholmeley Park and therefore within easy reach of the café society and village amenities, there are multiple transport connections nearby including Highgate underground.

Features

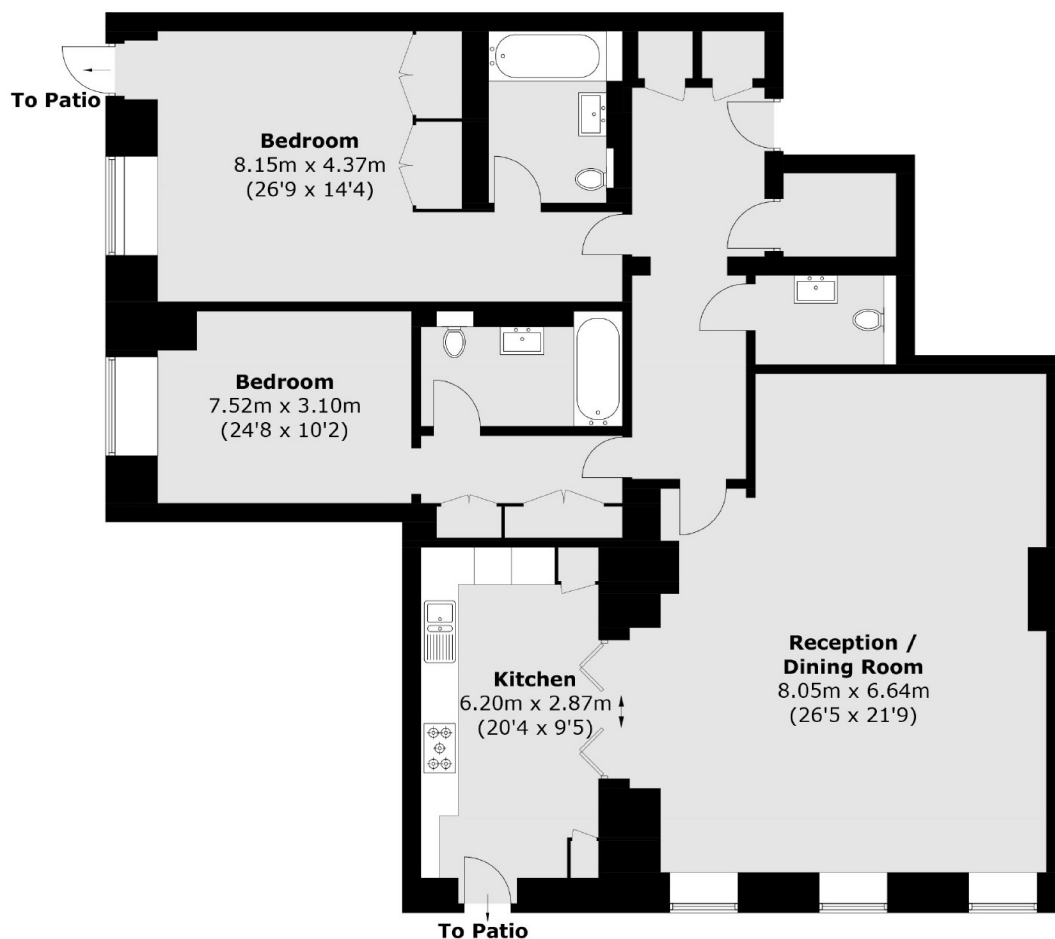
- Two Bedrooms
- Two Bathrooms
- Spacious Reception
- Fitted Kitchen
- Secure Parking
- Indoor Pool/Leisure Complex







Cholmeley Park, London, N6



Total area (approx.): 156.8 sq. m (1,687.8 sq. ft)