



Sheldon Avenue, N6

£10,000 Per calendar month

Dexters



Sheldon Avenue, N6

An impressive five double bedroom detached house with a landscaped garden and off-street parking. Spilt over two floors, there is plenty of built in storage and is ideal for a family-

On the ground floor there is a bright and generous double reception room that leads directly onto the garden, a large eat-in kitchen with modern appliances including an American-style fridge freezer, a study and a guest WC.

On the first floor there are five double bedrooms all with ample built in storage and two family bathrooms. The principal bedroom has a private balcony that overlooks the garden.

Ideally located for the many renowned schools in Highgate and Muswell Hill with Kenwood and Highgate Woods also nearby. There is also easy access to the A406 and A1.

Features

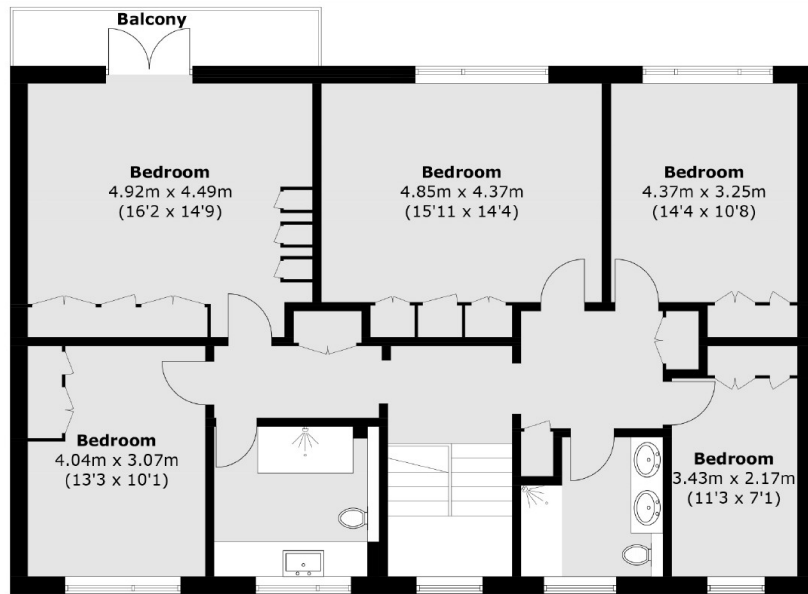
- Detached House
- Five Double Bedrooms
- Two Bathrooms
- Garage
- Study
- Off-Street Parking



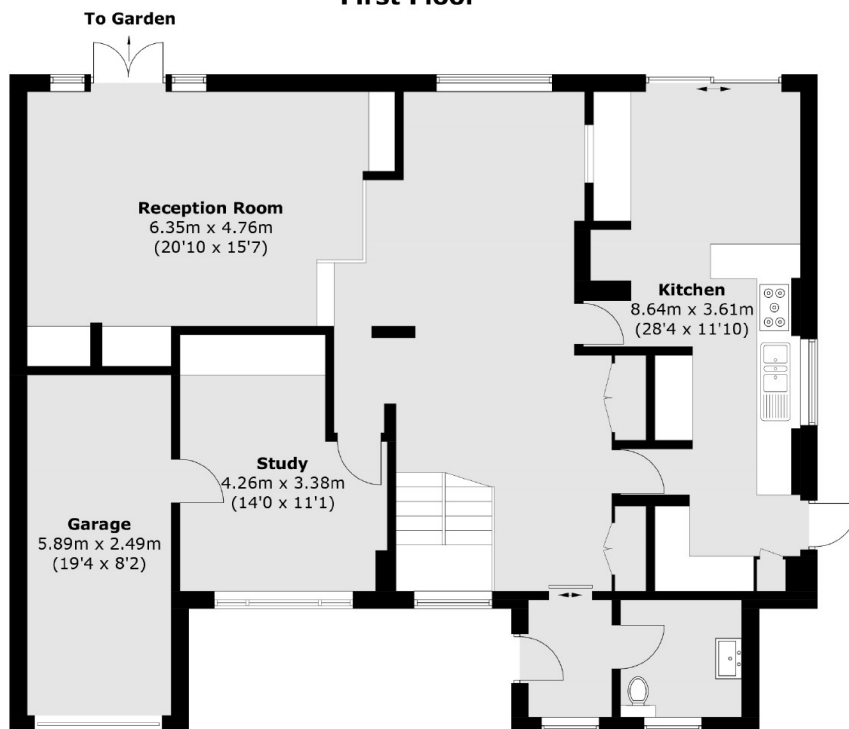




Sheldon Avenue, London, N6



First Floor



Ground Floor

Total area (approx.): 243.1 sq. m (2,616.7 sq. ft)
Balcony area: 5.1 sq. m (54.9 sq. ft)