



Lyttelton Road, N2

£1,650,000

Dexters



Lyttelton Road, N2

Situated between The Bishops Avenue and Winnington Road, an outstanding five bedroom semi-detached house with a distinctive green pantile roof and a large rear garden with southerly aspect.

This delightful home has a wide frontage and provides spacious accommodation including a welcoming entrance hall, guest WC, three reception rooms, kitchen diner and has several entry points to the garden.

On the upper floors are five generous bedrooms, a family bathroom, shower room and good storage with potential to rearrange the layout.

Externally there is good off-street parking, a garage and a large level rear garden which is ideal for entertaining.

Conveniently located close to the local shopping at Market Place, schools and places of worship. East Finchley underground station (Northern Line) is less than half a mile away as well as good bus links.

Features

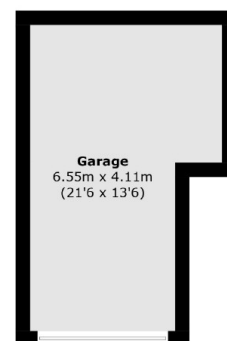
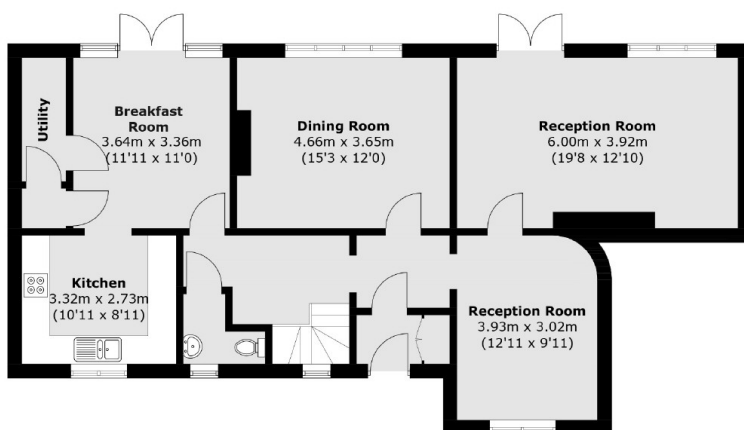
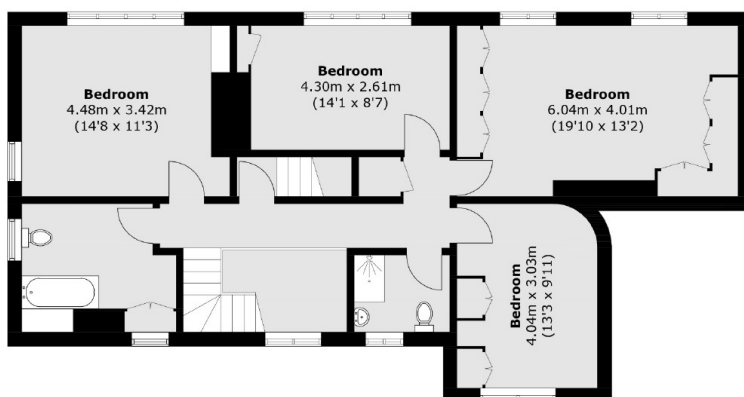
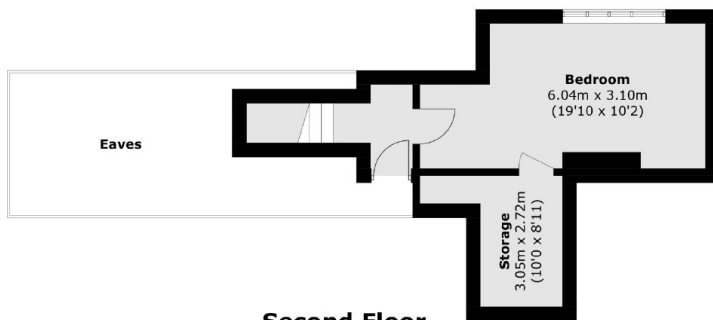
- Five Bedrooms
- Kitchen Breakfast Room
- Three Reception Rooms
- Garage
- South Facing Garden
- Available Chain Free







Lyttelton Road, London, N2



(Not Shown In Actual
Location / Orientation)

Total area (approx.): 217.5 sq. m (2,341.1 sq. ft)
Garage: 23.2 sq. m (249.7 sq. ft)
(Excluding Eaves)

Dexters

Highgate
35A Highgate High Street
London
N6 5JT
Sales
020 8545 8584

Energy Rating: D. We aim to make our particulars both accurate and reliable. However they are not guaranteed; nor do they form part of an offer or contract. If you require clarification on any points then please contact us, especially if you're traveling some distance to view. Please note that appliances and heating systems have not been tested and therefore no warranties can be given as to their good working order.

 **RICS** | Regulated
Estate Agent
and Letting Agent

[dexters.co.uk](https://www.dexters.co.uk)