



Bickerton Road, N19

£2,500 Per calendar month

A spacious two bedroom apartment with a separate office set on the top floor of a period conversion in a popular location. This well maintained property comprises of a generous open plan reception and kitchen with great views, two double bedrooms and a separate office space.

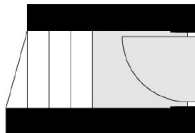
Bickerton Road is in a key position with a pleasant walk to Waterlow Park and the charming street cafes of Swains Lane just beyond, and easy access to both Archway and Tufnell Park tube stations.

Features

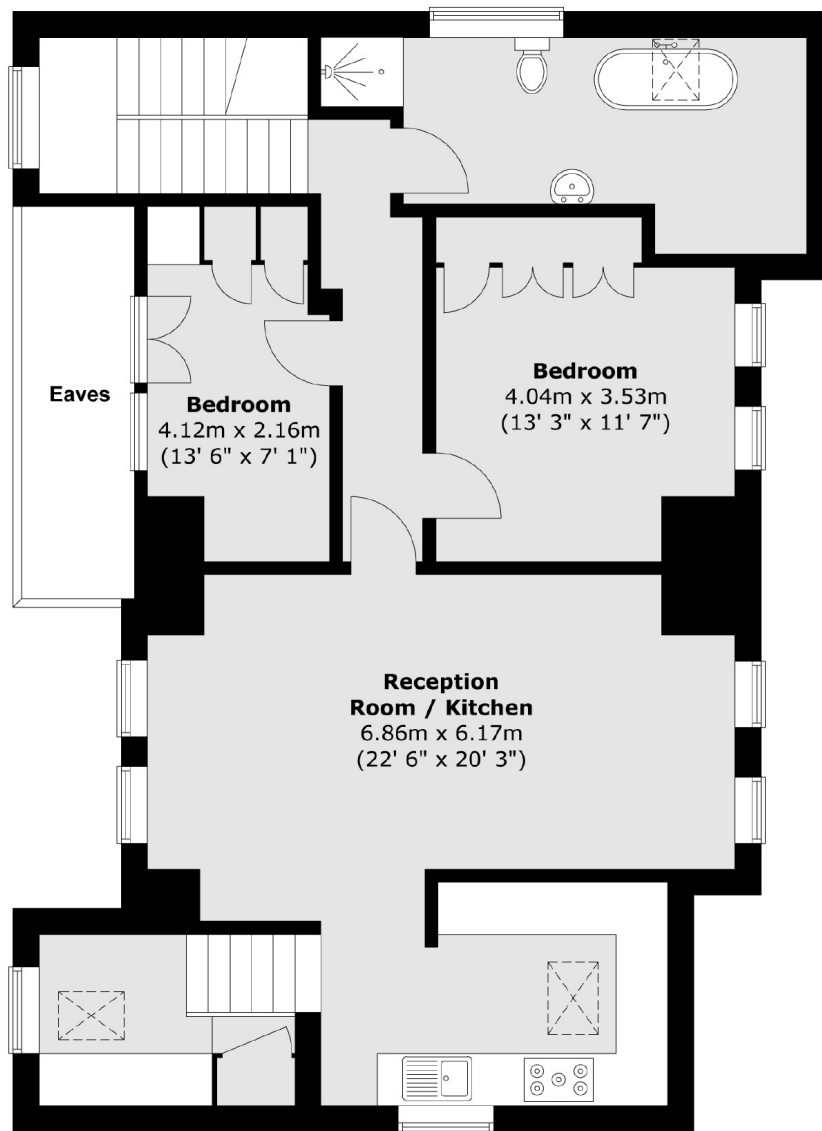
- Top Floor
- Two Doubles
- Separate Office
- Open Plan
- Great Views
- Great Location

Bickerton Road, London, N19

Second Floor



Third Floor



Total area (approx.) : 92.8 sq. m (999 sq. ft)

Dexters

Highgate
35A Highgate High Street
London
N6 5JT
Lettings
020 8545 8585

Energy Rating: E. We aim to make our particulars both accurate and reliable. However they are not guaranteed; nor do they form part of an offer or contract. If you require clarification on any points then please contact us, especially if you're traveling some distance to view. Please note that appliances and heating systems have not been tested and therefore no warranties can be given as to their good working order.

 **RICS** | Regulated
Estate Agent
and Letting Agent

dexters.co.uk