



## Bisham Gardens, N6

### £775,000

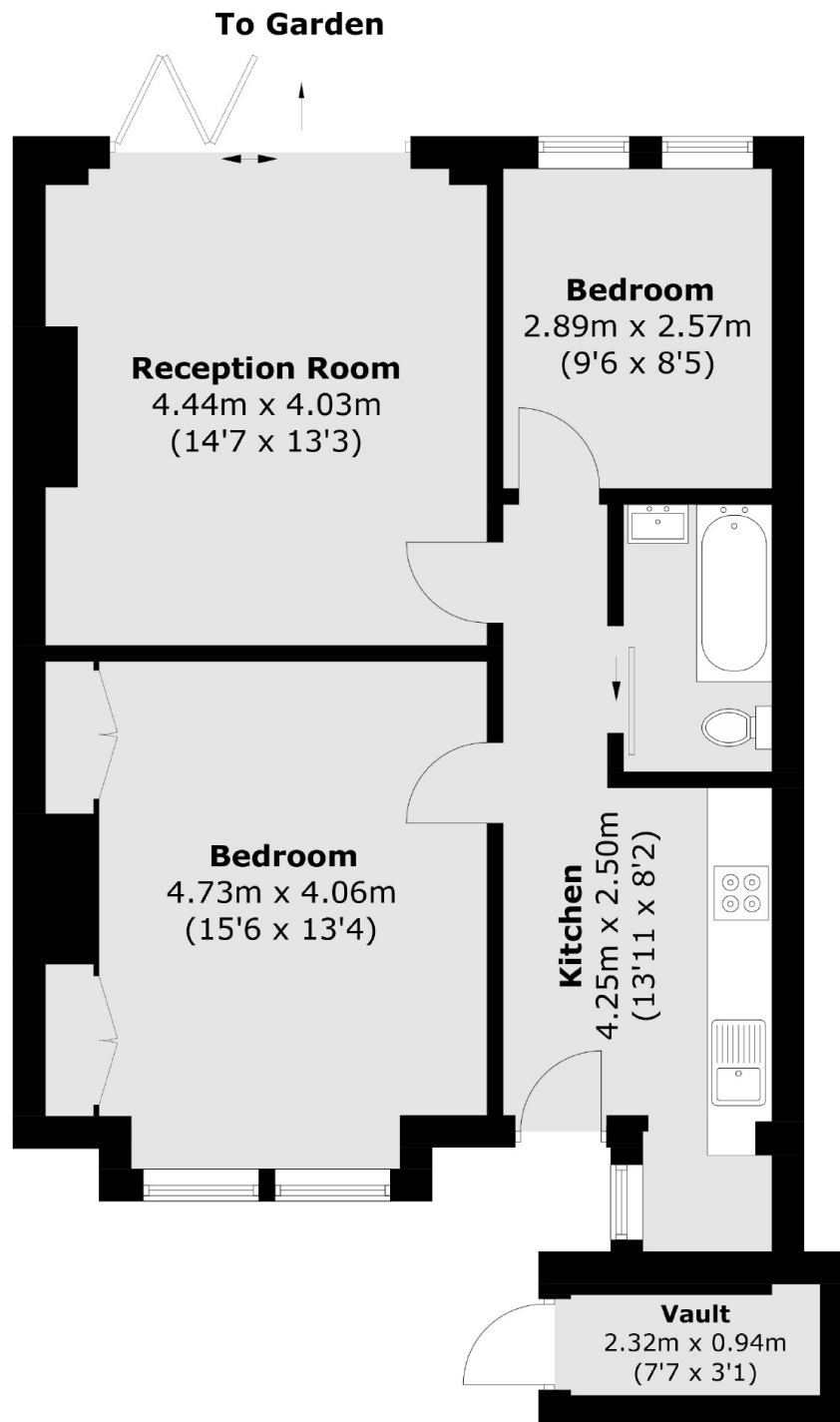
A charming two bedroom garden apartment, forming part of a handsome Victorian red-brick property and featuring a separate reception room with bi-folding doors leading on to a south facing garden.

This fine home is positioned in the very heart of the village, amongst the shops, café society and just moments from Waterlow Park, schools and the local transport connections.

### Features

- Reception Room
- Separate Kitchen
- Bathroom
- Own Entrance
- Village Location
- South Facing Garden

# Bisham Gardens, London, N6



Total area (approx.): 62.9 sq. m (677.0 sq. ft)  
Vault: 2.3 sq. m (24.7 sq. ft)

## Dexters

Highgate  
35A Highgate High Street  
London  
N6 5JT  
Sales  
020 8545 8584

Energy Rating: C. We aim to make our particulars both accurate and reliable. However they are not guaranteed; nor do they form part of an offer or contract. If you require clarification on any points then please contact us, especially if you're traveling some distance to view. Please note that appliances and heating systems have not been tested and therefore no warranties can be given as to their good working order.

 **RICS** | Regulated  
Estate Agent  
and Letting Agent

[dexters.co.uk](https://www.dexters.co.uk)