

## Great North Road, N2

### £500,000

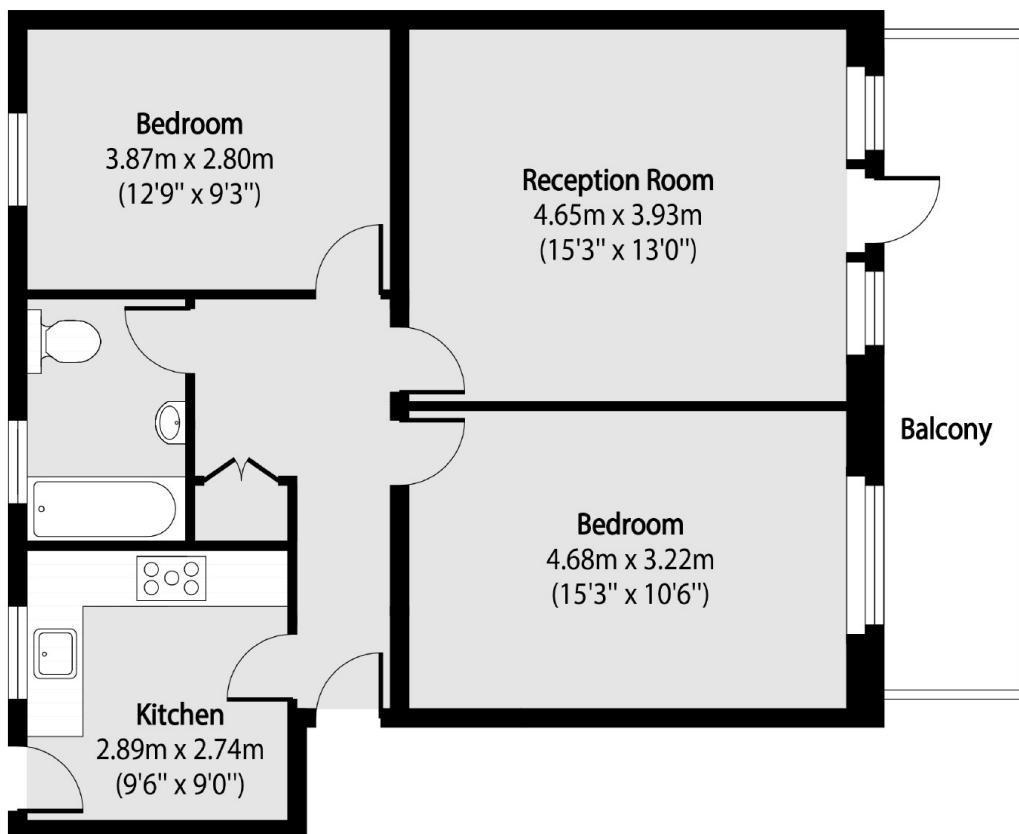
A two double bedroom first floor flat, delightfully presented with a modern kitchen and bathroom and a spacious reception room with balcony in a low rise block, close to the shopping and transport.

Linksview is set back from the road behind a slip road which provides parking for the residents and is within half a mile of East Finchley Northern line underground station.

### Features

- Two Double Bedrooms
- Fitted Kitchen
- Reception with Balcony
- Bathroom
- Communal Garden
- Chain Free

# Great North Road, London, N2



Total area (approx): 67.60 sq m (728 sq. ft)

Balcony total area (approx): 10.50 sq m (113 sq. ft)