



## North Hill, N6

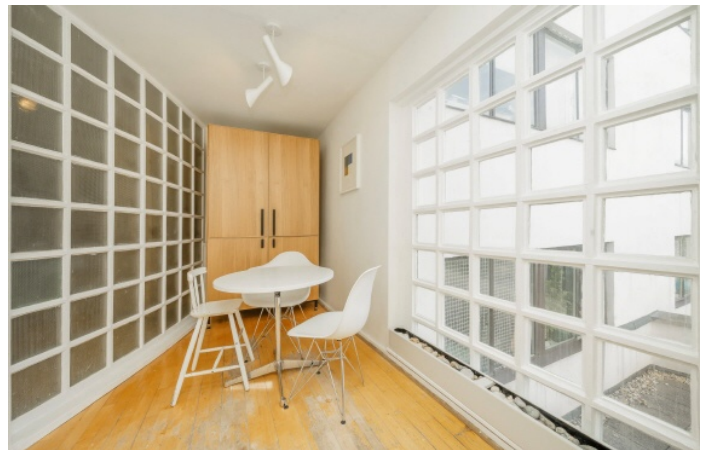
£775,000

A first floor apartment within an iconic Grade I Listed building designed by the modernist architect Berthold Lubetkin, set within extensive grounds including tennis courts and heated swimming pool.

Placed for easy access to the local schools and the village amenities, the vast open spaces of Hampstead Heath and Kenwood can be reached from Hampstead Lane.

### Features

Two Bedrooms  
Reception Room  
Kitchen Breakfast Room  
Extensive Communal Gardens  
Tennis Courts/Swimming Pool  
Heating Inclusive



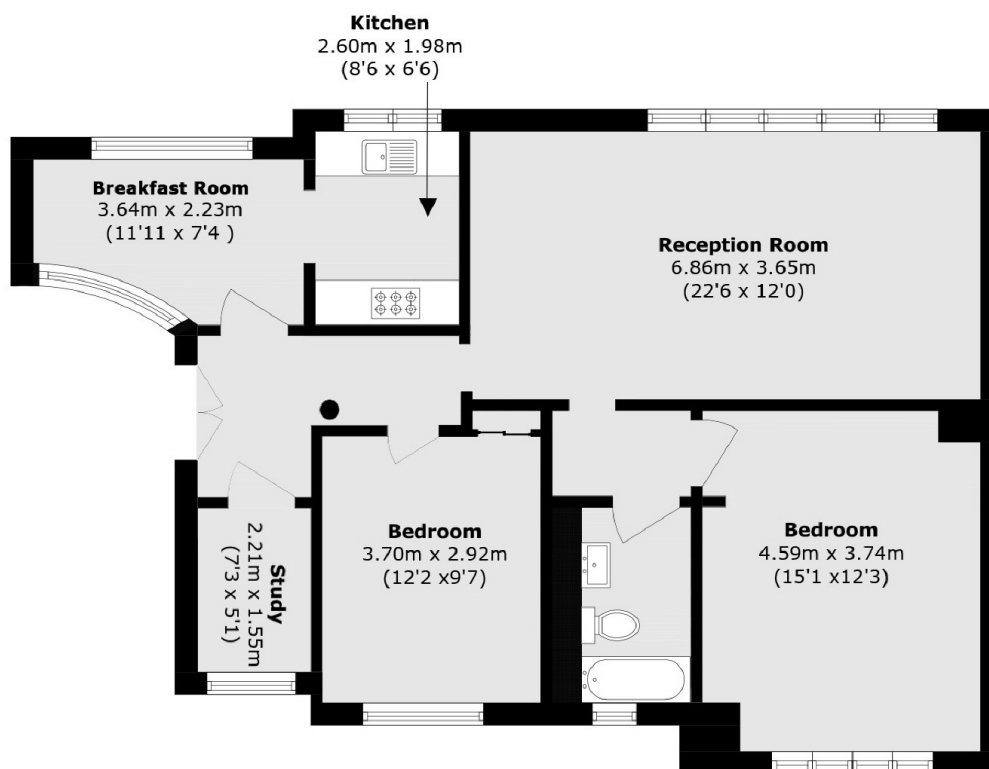
## North Hill, N6

With an impressive and vast communal entrance, this light filled apartment retains a true period feel and epitomises the original concept of the architect.





# North Hill, London, N6



Total area (approx.): 86.0 sq. m (925.7.0 sq. ft)