



Priory Gardens, N6
£1,750,000

Dexters



Priory Gardens, N6

In this highly sought after location, a lovingly renovated and interior designed semi-detached family home, elevated from the road and with a bespoke kitchen diner leading to the rear garden.

The entrance hall is filled with light via stained glass windows to the front and there is underfloor heating to the ground floor along with hardwood flooring. The main reception room with bay window retains the original fireplace surround and has a delightful views over the roof tops towards Queens Wood.

The bespoke kitchen designed with a family in mind, has ample space for dining and has a full width glazed opening doors leading to the rear garden.

On the first floor there are three bedrooms providing generous storage and a family bathroom. On the upper floor is a main suite with far-reaching views and a sumptuous en suite.

Located in this leafy cul-de-sac next to Queen's Wood, there is easy access to Highgate Village, Crouch End Broadway, and a number of popular local schools, Highgate tube station is just 0.1 mile from the property.

Features

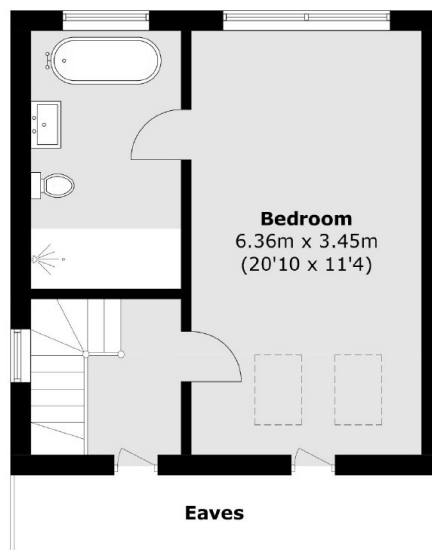
- Four Bedrooms
- Two Bathrooms
- Reception Room
- Bespoke Kitchen Diner
- Guest Cloakroom
- Close to Woodland



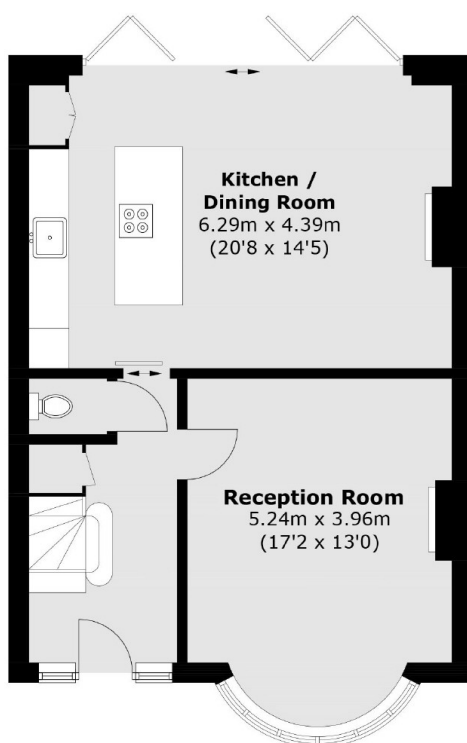
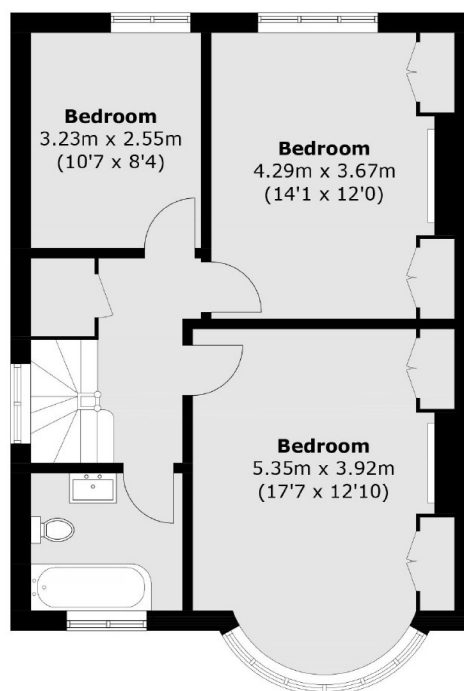




Priory Gardens, London, N6



Second Floor



Ground Floor

First Floor

Total area (approx.): 152.6 sq. m 1,642.6 sq. ft)
(Excluding Eaves)

Dexters

Highgate
35A Highgate High Street
London
N6 5JT
Sales
020 8545 8584

Energy Rating: C. We aim to make our particulars both accurate and reliable. However they are not guaranteed; nor do they form part of an offer or contract. If you require clarification on any points then please contact us, especially if you're traveling some distance to view. Please note that appliances and heating systems have not been tested and therefore no warranties can be given as to their good working order.

 **RICS** | Regulated
Estate Agent
and Letting Agent

dexters.co.uk