



Langdon Park Road, N6

£2,100,000

Dexters



Langdon Park Road, N6

A character packed semi detached Victorian family house with an impressive kitchen/diner/family room with pitched double height ceiling and a glazed Crittall windows and doors over looking the garden.

This impressive home is immaculately presented and provides free flowing accommodation ideal for a young family.

Approached through a stained glass door there is a charming period feel with a host of modern amenities.

Positioned in this popular location, close to The Parkland Walk, there is access to Highgate Village with it's schools and café society along with transport connections at Highgate tube 0.5 miles away.

Features

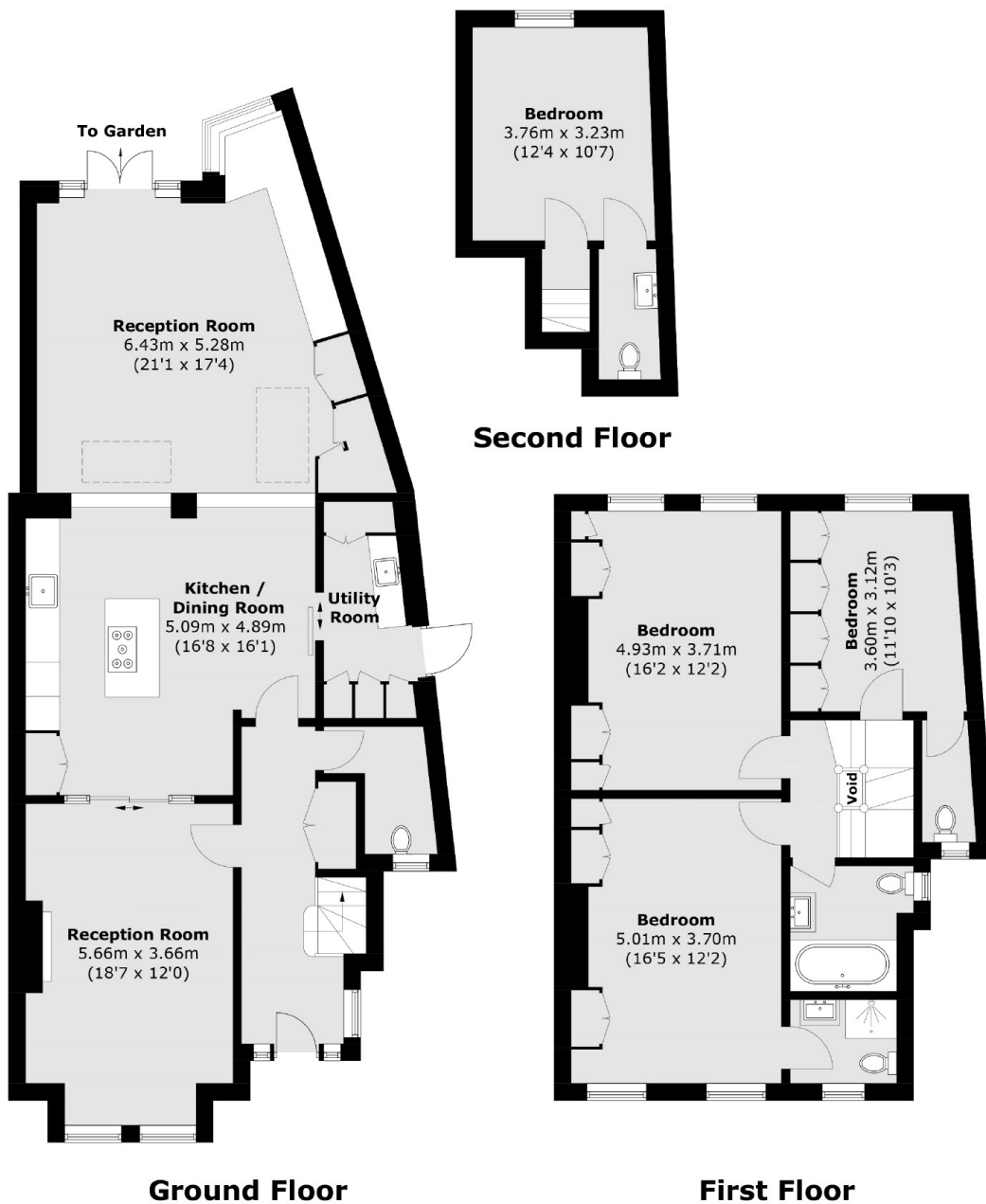
- Four Bedrooms
- Two Bathrooms
- Formal Reception Room
- Bespoke Kitchen
- Family Room/Diner
- Off Street Parking







Langdon Park Road, London, N6



Total area (approx.): 180.2 sq. m (1,939.6 sq. ft)

Dexters

Highgate
35A Highgate High Street
London
N6 5JT
Sales
020 8545 8584

Energy Rating: C. We aim to make our particulars both accurate and reliable. However they are not guaranteed; nor do they form part of an offer or contract. If you require clarification on any points then please contact us, especially if you're traveling some distance to view. Please note that appliances and heating systems have not been tested and therefore no warranties can be given as to their good working order.

 **RICS** | Regulated
Estate Agent
and Letting Agent

[dexters.co.uk](https://www.dexters.co.uk)