



## Langbourne Avenue, N6

### £550,000

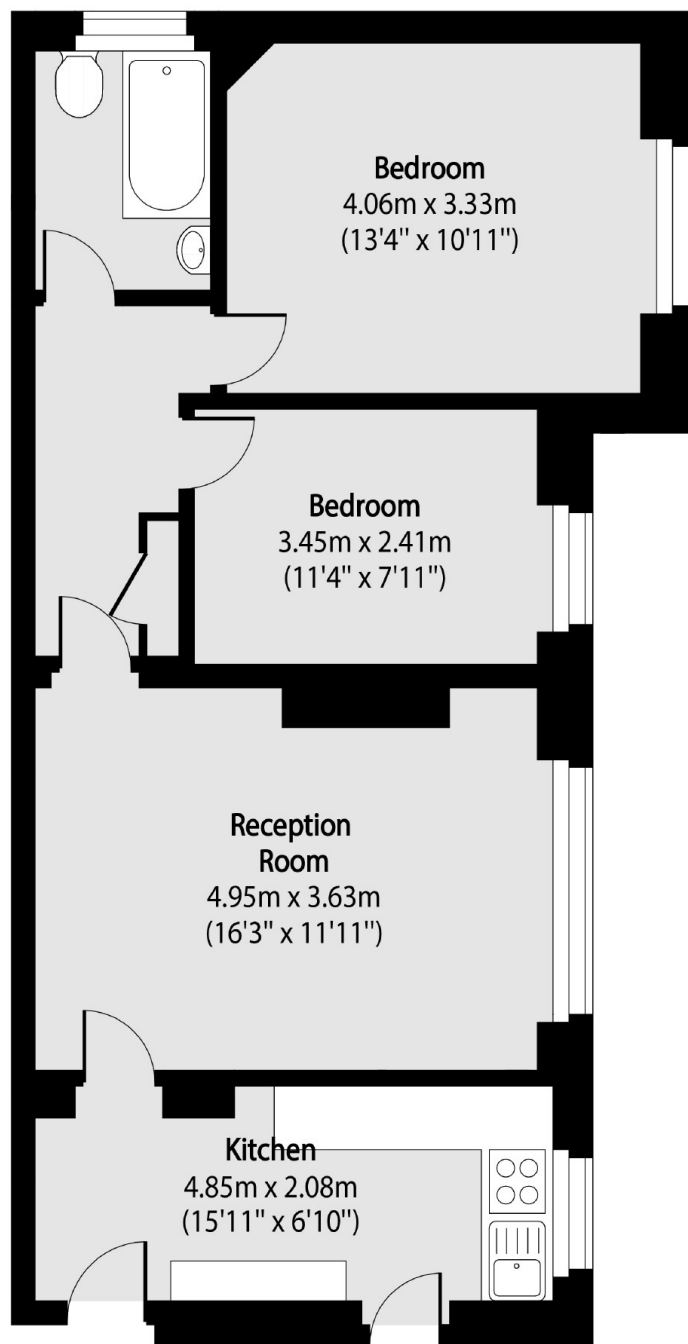
A light filled two bedroom raised first floor flat in this highly popular block, with verdant views over the communal gardens. Recently decorated, the property is in ready to move into condition.

Quietly located on the sought after Holly Lodge development and therefore close to the independent shops and café society of Swains Lane, the open acres of Hampstead Heath.

### Features

- Two Bedrooms
- Reception Room
- Kitchen
- Bathroom
- Communal Gardens
- Sought After Location

# Langbourne Avenue, London, N6



Total area (approx): 62.70 sq m (675 sq. ft)