



Archway Road, N6

£3,000 Per calendar month

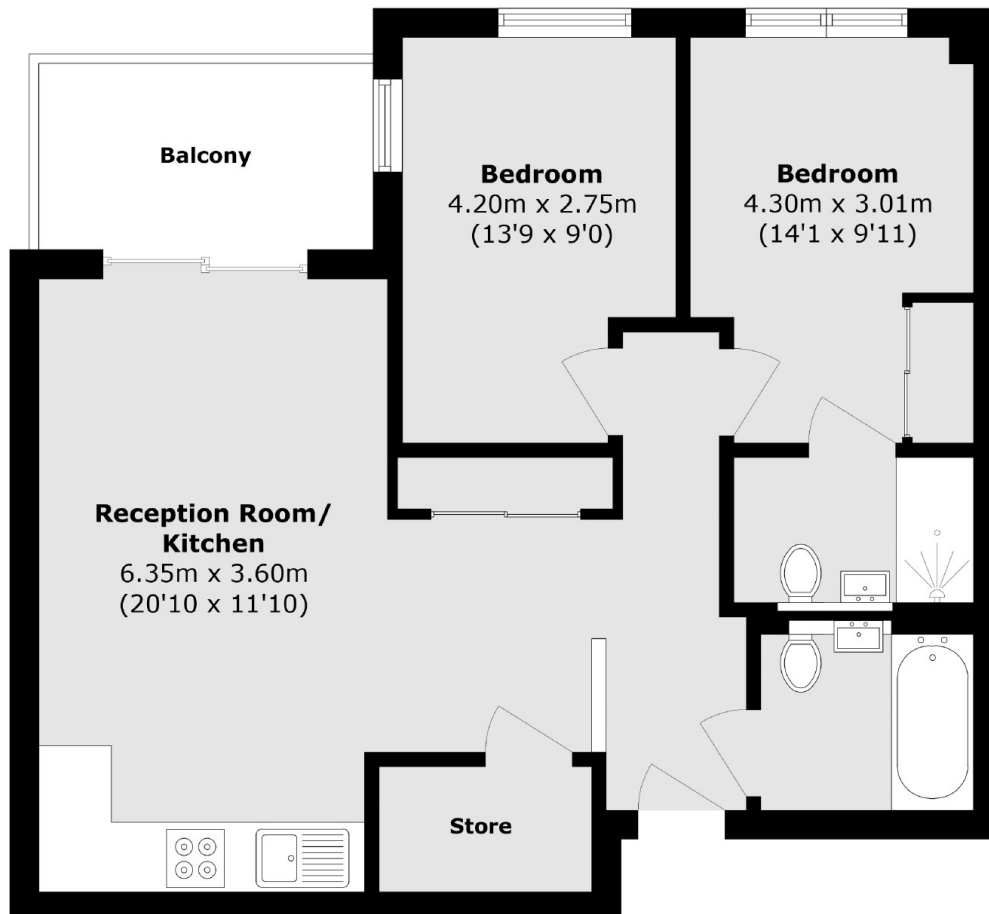
A two double bedroom, two bathroom apartment in a modern development with a private balcony, allocated parking, lift access and concierge.

Archway Road is ideally located for access to Highgate underground station (Northern Line) as well as local shops, cafes, pubs and restaurants in Highgate Village.

Features

- Two Double Bedrooms
- Two Bathrooms
- Open Plan
- Private Balcony
- Ample Storage
- Allocated Parking

Archway Road, London, N6



Total area (approx.): 72.8 sq. m (783.6 sq. ft)

Balcony area (approx.): 6.9 sq. m (74.2 sq. ft)