



## Cromwell Avenue, N6

### £675,000

A beautifully presented two bedroom apartment converted from this handsome Victorian house and retaining original period detailing, with a high ceilinged bay fronted reception room.

Cromwell Avenue is a delightful tree-lined road between Highgate Village and the Northern line tube station, there is also easy access to Waterlow Park along with Highgate Wood.

### Features

- Two Bedrooms
- Modern Bathroom
- En Suite Shower
- Reception Room
- Open Plan Kitchen
- Period Detail

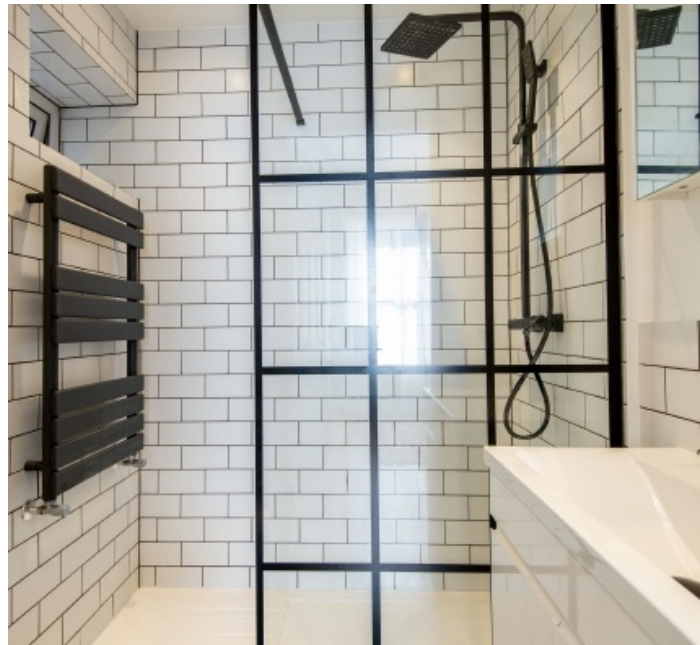




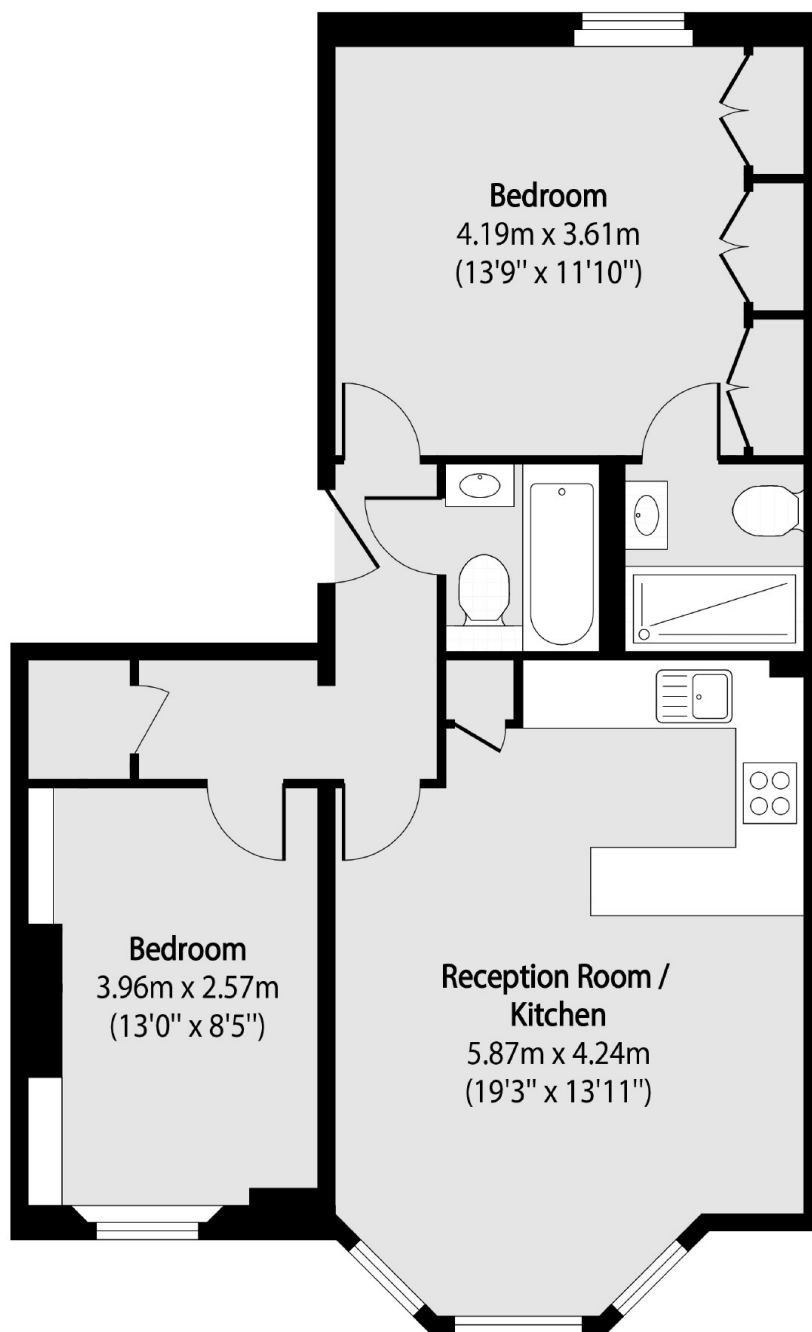
## Cromwell Avenue, N6

This charming home retains a warmth of character, featuring a modern open plan kitchen/reception room with large sash windows and an en suite shower room with Crittall style screen and Metro tiling.





# Cromwell Avenue, London, N6



Total area (approx): 59.27 sq m (638 sq. ft)