



Hornsey Lane, N6

£275,000

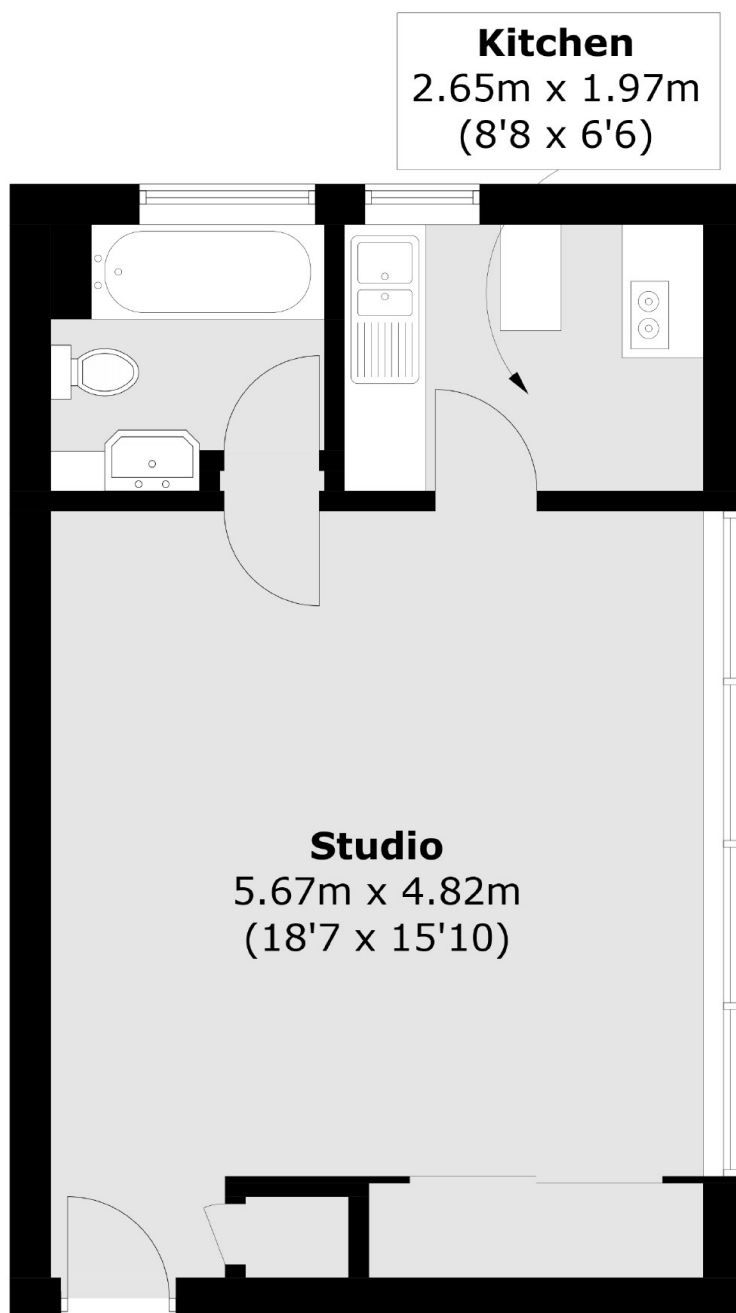
A seventh floor studio apartment with rear facing views over large communal gardens in a popular purpose built block with the advantage of passenger lift access.

Located towards Crouch Hill and therefore convenient for The Broadway with its selection of shops and restaurants, Highgate Village along with Waterlow Park are at the end of the road.

Features

- Rear Facing
- Studio Flat
- Bathroom
- Separate Kitchen
- Communal Gardens
- Passenger Lift

Hornsey Lane, London, N6



Total area (approx.): 37.7 sq. m (405.8 sq. ft)

Dexters

Highgate
35A Highgate High Street
London
N6 5JT
Sales
020 8545 8584

Energy Rating: E. We aim to make our particulars both accurate and reliable. However they are not guaranteed; nor do they form part of an offer or contract. If you require clarification on any points then please contact us, especially if you're traveling some distance to view. Please note that appliances and heating systems have not been tested and therefore no warranties can be given as to their good working order.

 **RICS** | Regulated
Estate Agent
and Letting Agent

[dexters.co.uk](https://www.dexters.co.uk)