



Aylmer Road, N2

£600,000

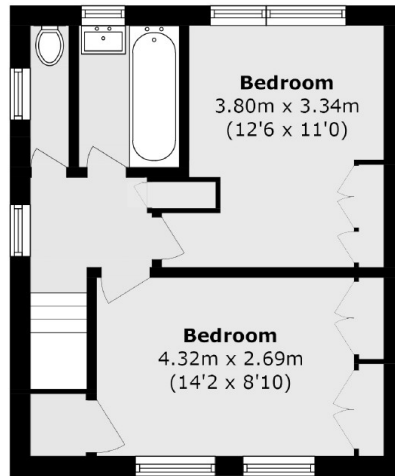
A well-presented two double bedroom house with a private garden and off-street parking. The property also offers a kitchen diner, a separate reception, a family bathroom and a guest WC.

Ideally located for Highgate Village, East Finchley and access to the A406, A1, M1. East Finchley Northern line underground station and shopping facilities are just half a mile away.

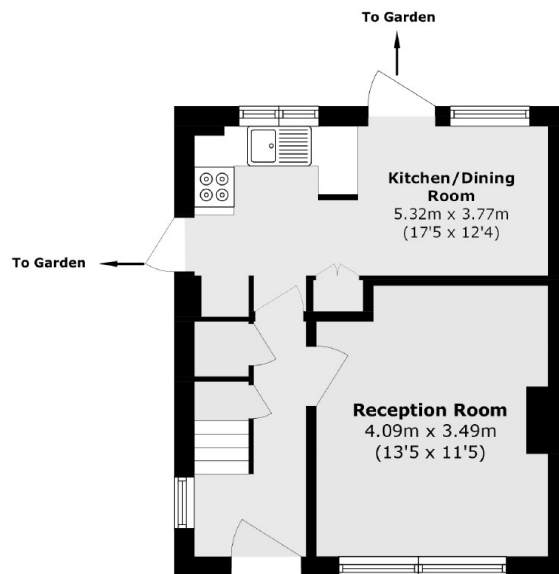
Features

- Two Bedrooms
- Bathroom
- Reception Room
- Kitchen Diner
- Off-Street Parking
- Private Garden

Aylmer Road, London, N2



First Floor



Ground Floor

Total area (approx.): 68.9 sq. m (741.6 sq. ft)