



Milton Road, N6

£700,000

An exceptionally spacious split-level conversion on the ground and lower ground floors of a handsome Edwardian red-brick property, featuring an impressive high-ceilinged reception room.

Situated in the highly sought after 'Miltons' enclave and close to the Parkland Walk environmental trail. Highgate Northern line underground is just 0.5 miles away.

Features

- Two Double Bedrooms
- Spacious Reception Room
- Fitted Kitchen
- Bathroom
- Two Private Patios
- Storage and Potential



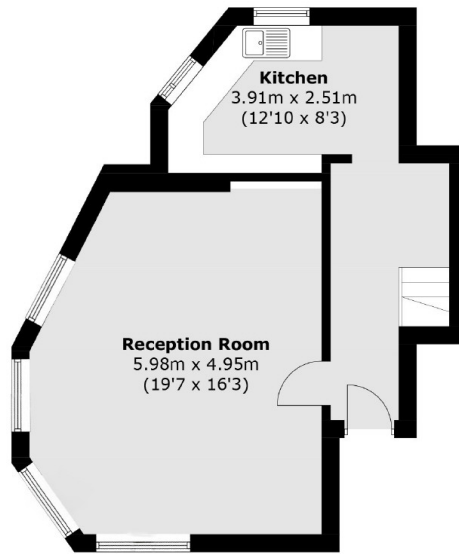
Milton Road, N6

Retaining a number of period features, the spacious reception room has plasterwork ceiling detail and a number of large sash windows providing an abundance of natural light and has wooden flooring. There is also an equally impressive fitted kitchen with dual aspect and a breakfast bar.

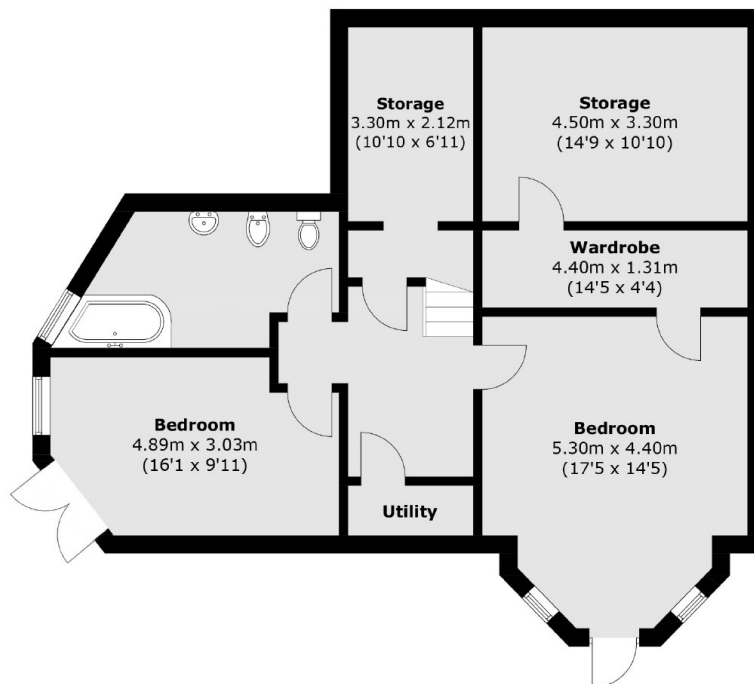
On the lower ground floor there are two double bedrooms, one with a walk in dressing area and access to a large undeveloped storage room, which could provide a number of uses. Each of the bedrooms has direct access to their own private patio areas.



Milton Road, London, N6



Ground Floor



Lower Ground Floor

Total area (approx.): 132.4 sq. m (1,425.1 sq. ft)

Dexters

Highgate
35A Highgate High Street
London
N6 5JT
Sales
020 8545 8584

Energy Rating: D. We aim to make our particulars both accurate and reliable. However they are not guaranteed; nor do they form part of an offer or contract. If you require clarification on any points then please contact us, especially if you're traveling some distance to view. Please note that appliances and heating systems have not been tested and therefore no warranties can be given as to their good working order.

 **RICS** | Regulated
Estate Agent
and Letting Agent

[dexters.co.uk](https://www.dexters.co.uk)