



Hillside Gardens, N6

£1,375,000

A three bedroom mid-century house forming part of the Southwood House Estate. Presented in near original condition, the property has a delightful private garden and access to large communal gardens.

Quietly positioned within easy reach of Highgate underground, Highgate Wood and the amenities of the village, there are a number of highly rated local schools nearby.

Features

- Three Bedrooms
- Reception Room
- Original Kitchen
- Bathroom And Shower
- Extensive Communal Gardens
- Off-Street Parking



Hillside Gardens, N6

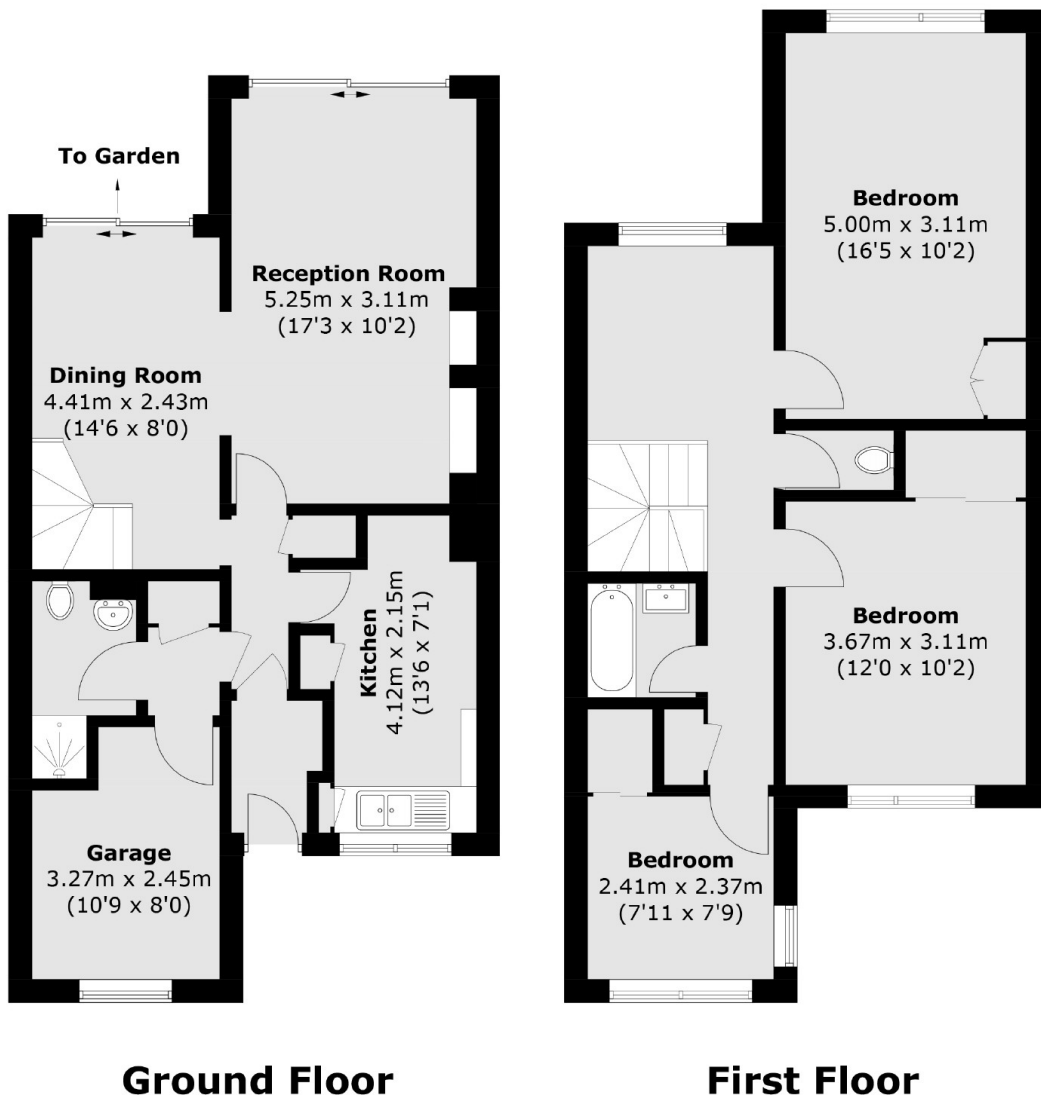
Purchased off plan from new, this home is on market for the first time in nearly 70 years and provides a superb opportunity to either remodel or restore the property.

The property, originally featured in the Geffrye Museum (now the Museum of Home) extolling the virtues of this highly sought after development by Andrews, Emerson, Sherlock & Keable, designed and built circa 1958 on the site of Southwood House.

Homes in this sought after location are rare to the market and this particular property retains a considerable number of original design features highlighting the mid-century movement and is complimented by double glazing.



Hillside Gardens, London, N6



Total area (approx.): 109.6 sq. m (1,179.7 sq. ft)

Dexters

Highgate
35A Highgate High Street
London
N6 5JT
Sales
020 8545 8584

Energy Rating: D. We aim to make our particulars both accurate and reliable. However they are not guaranteed; nor do they form part of an offer or contract. If you require clarification on any points then please contact us, especially if you're traveling some distance to view. Please note that appliances and heating systems have not been tested and therefore no warranties can be given as to their good working order.

 **RICS** | Regulated
Estate Agent
and Letting Agent

[dexters.co.uk](https://www.dexters.co.uk)