



South Grove, N6

£3,000 Per calendar month

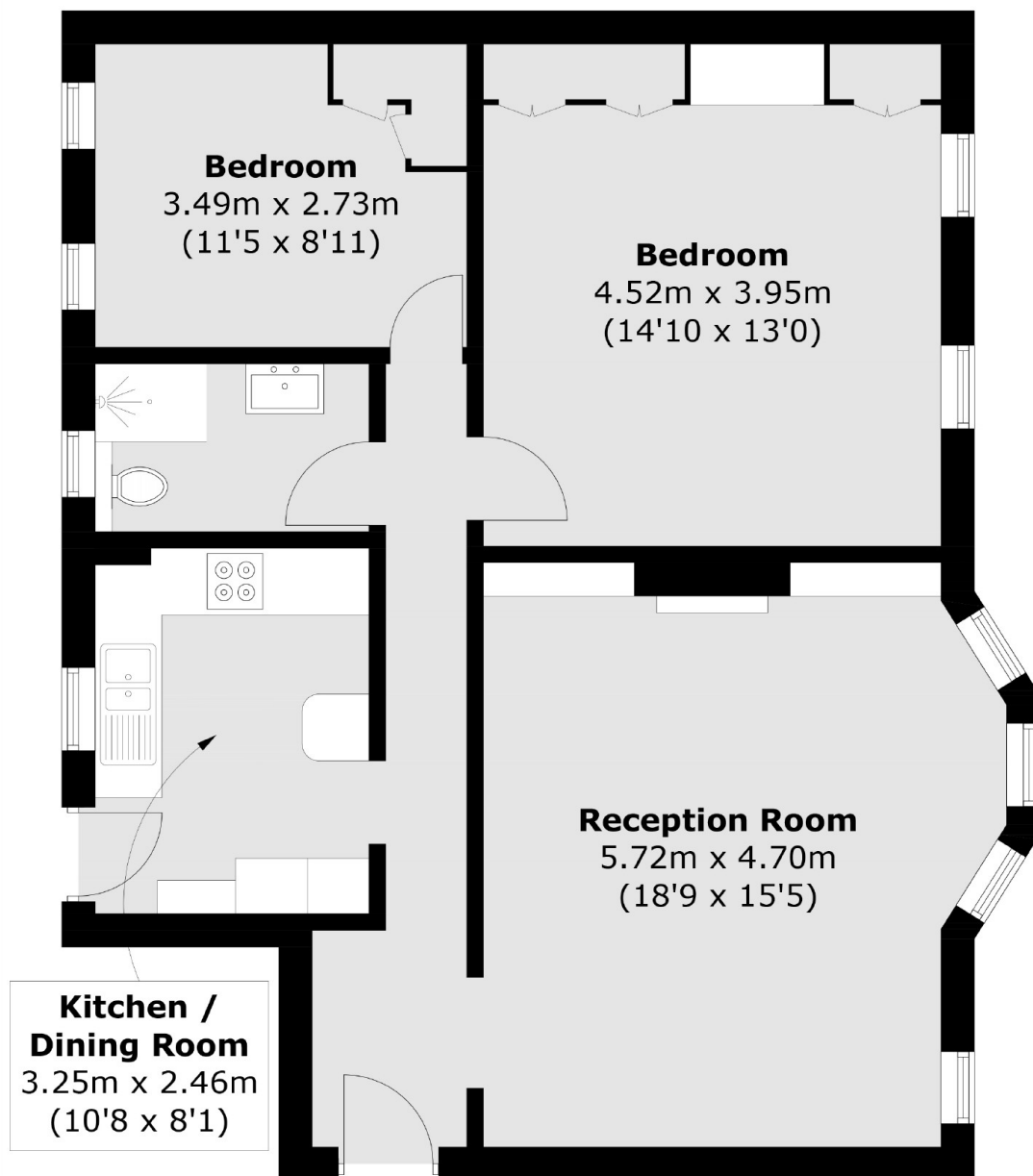
A characterful two double bedroom apartment set on the first floor of a 1930s mansion development with a bright lounge, separate kitchen, off-street parking and a communal garden.

South Grove House is perfectly placed towards the end of South Grove and therefore convenient for Hampstead Heath, the village amenities and the cultural Highgate Society.

Features

- Two Double Bedrooms
- First Floor
- Mansions Block
- Communal Gardens
- Bright
- City Views

South Grove, London, N6



Total area (approx.): 72.8 sq. m (783.6 sq. ft)