

## Langdon Park Road, N6

### £350,000

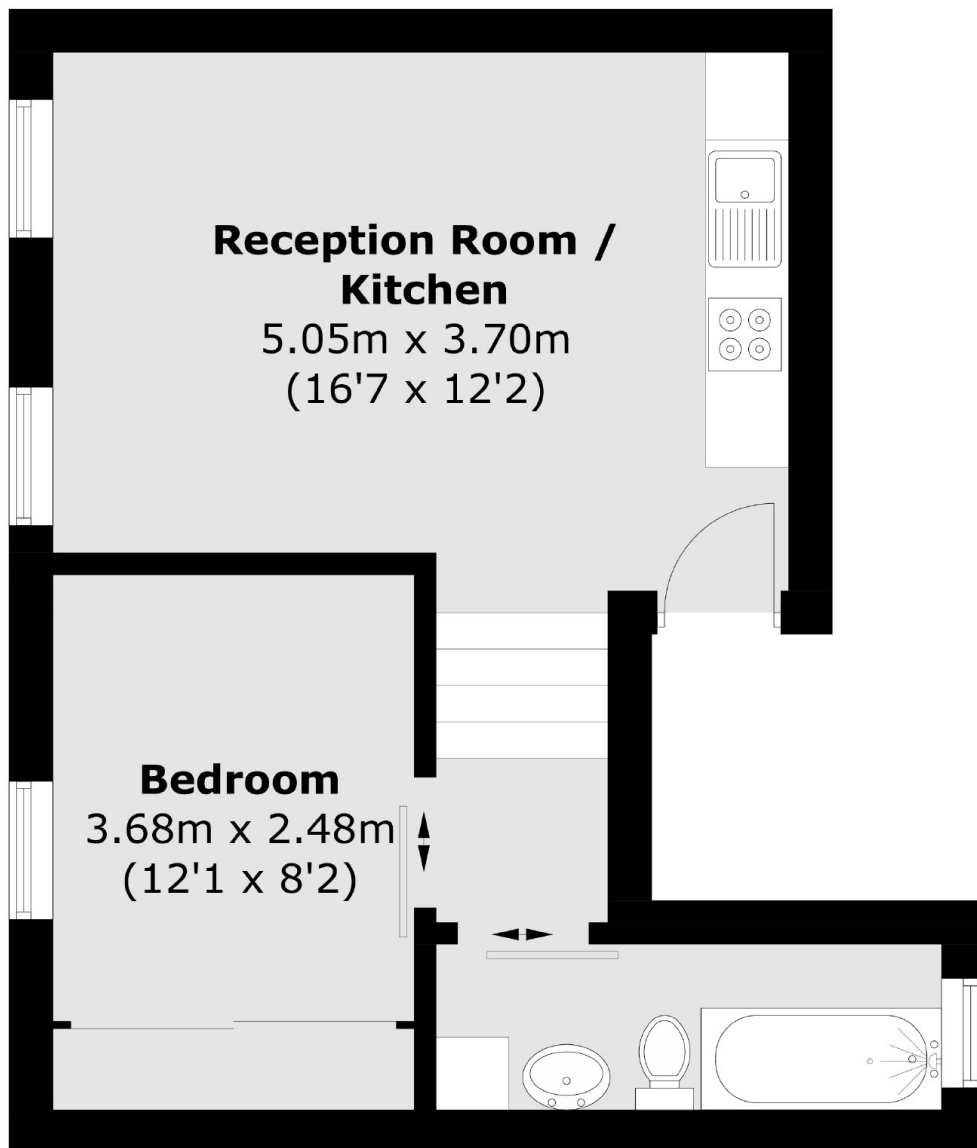
A split-level converted apartment within a handsome Victorian building, featuring an open plan kitchen reception room with wooden flooring and access to large loft storage.

In the highly popular 'Miltons' enclave, providing easy access to Highgate and Crouch End, there are good transport connections available at Archway and Highgate underground stations.

### Features

- Split Level Conversion
- One Bedroom
- Bathroom
- Reception/Kitchen
- Loft Storage
- Near Parkland Walk

# Langdon Park Road, London, N6



Total area (approx.): 35.0 sq. m (376.7 sq. ft)

## Dexters

Highgate  
35A Highgate High Street  
London  
N6 5JT  
Sales  
020 8545 8584

Energy Rating: D. We aim to make our particulars both accurate and reliable. However they are not guaranteed; nor do they form part of an offer or contract. If you require clarification on any points then please contact us, especially if you're traveling some distance to view. Please note that appliances and heating systems have not been tested and therefore no warranties can be given as to their good working order.

 **RICS** | Regulated  
Estate Agent  
and Letting Agent

[dexters.co.uk](https://www.dexters.co.uk)