



Oakeshott Avenue, N6

£425,000

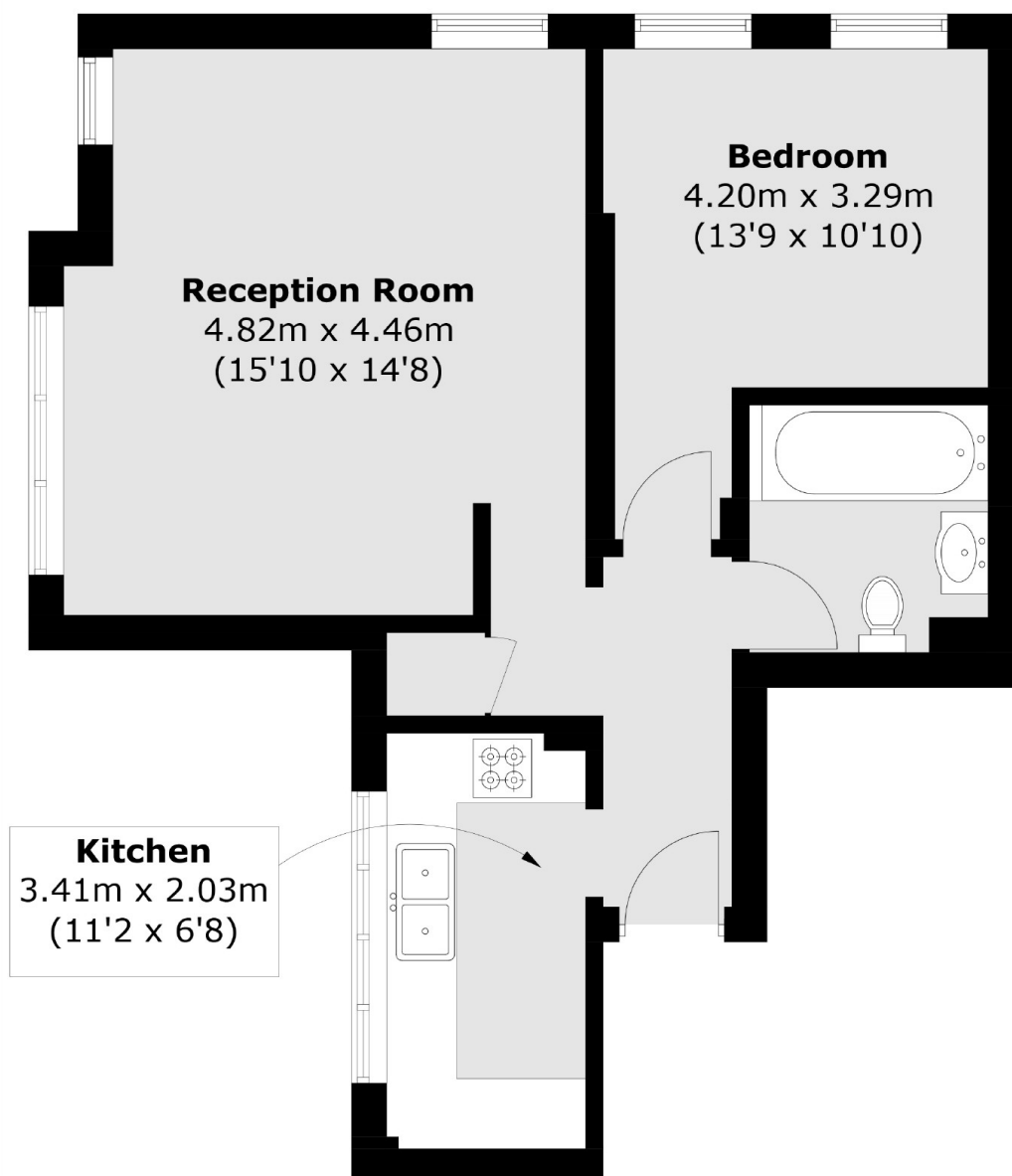
A well-presented one bedroom purpose built apartment located on the third floor with an impressive reception room, modern kitchen and bathroom. In addition, the property offers large communal gardens and residents parking.

Conveniently located close to a wonderful array of local independent shops and cafés on Swains Lane and the open acres of both Hampstead Heath and Waterlow Park.

Features

- Double Bedroom
- Reception Room
- Separate Kitchen
- Bathroom
- Communal Gardens
- Third Floor

Oakeshott Avenue, London, N6



Total area (approx.): 50.1 sq. m (539.1 sq. ft)