



Archway Road, N6

£585,000

A beautifully presented duplex apartment with a spacious reception room and open plan kitchen, quietly positioned at the rear of this considerably renovated development.

Securely placed less than half a mile to Highgate tube and the woods, there are a number of convenience stores along the route and there is access to Parkland Walk nearby.

Features

- Two Bedrooms
- Two Bathrooms
- Open Plan Kitchen
- Reception Room
- Private Patio
- Close To Tube

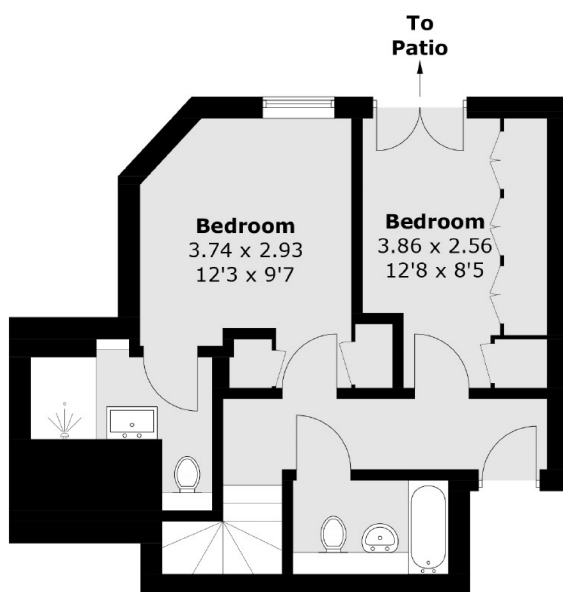


Archway Road, N6

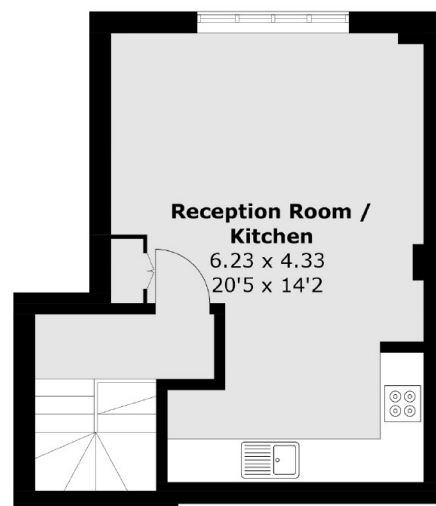
With the advantage of it's own private patio area at the rear of the property, the flat has the added advantage of wooden floors to the reception room and an en suite bathroom to the main bedroom.



Archway Road, London, N6



Ground Floor



First Floor

Total area (approx.): 66.5 sq. m (715.7 sq. ft)