



## North Grove, N6

£575,000

A top (second) floor apartment with large sash windows in this handsome Victorian house with elegant communal areas, spectacular far reaching views and large communal gardens.

Enviably located in the heart of the village, close to the High Street and within easy reach of Hampstead Heath, Highgate tube station is located within approximately 0.5 miles.

### Features

- Two Bedrooms
- Kitchen
- Bathroom
- Balcony
- Large Communal Garden
- Village Location



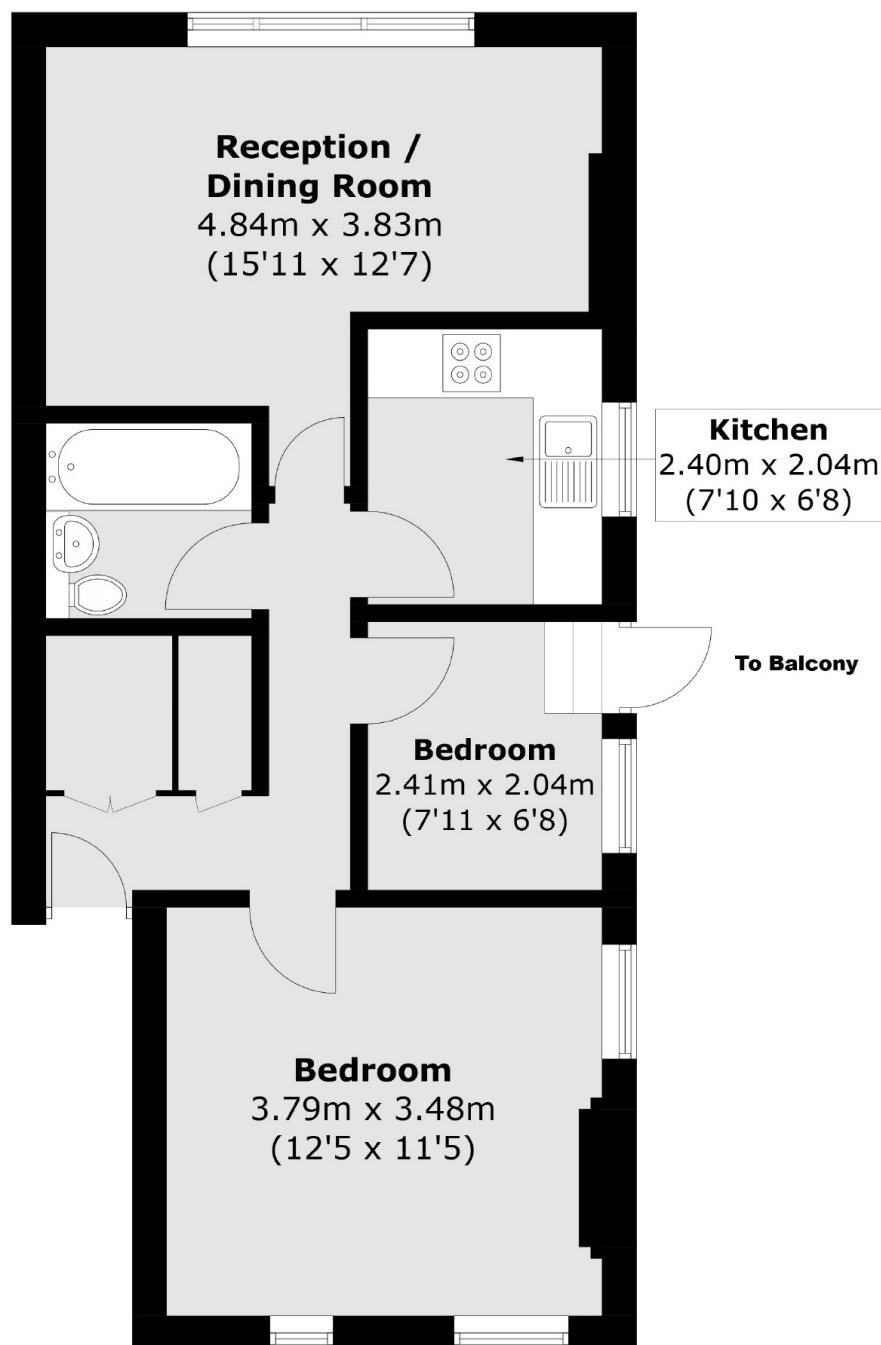
## North Grove, N6

This delightful apartment has an abundance of natural light due to the east and easterly aspects via a number of large sash windows and also features a separate kitchen and the advantage of balcony access which leads to the communal garden.





# North Grove, London, N6



Total area (approx.): 49.9 sq. m (537.1 sq. ft)

## Dexters

Highgate  
35A Highgate High Street  
London  
N6 5JT  
Sales  
020 8545 8584

Energy Rating: D. We aim to make our particulars both accurate and reliable. However they are not guaranteed; nor do they form part of an offer or contract. If you require clarification on any points then please contact us, especially if you're traveling some distance to view. Please note that appliances and heating systems have not been tested and therefore no warranties can be given as to their good working order.

 **RICS** | Regulated  
Estate Agent  
and Letting Agent

dexters.co.uk