



## Toyne Way, N6

### £875,000

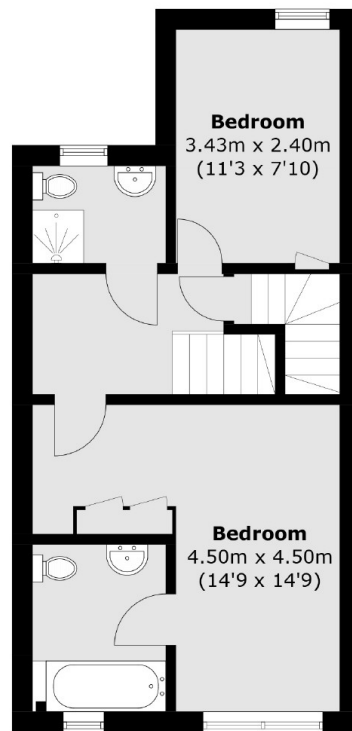
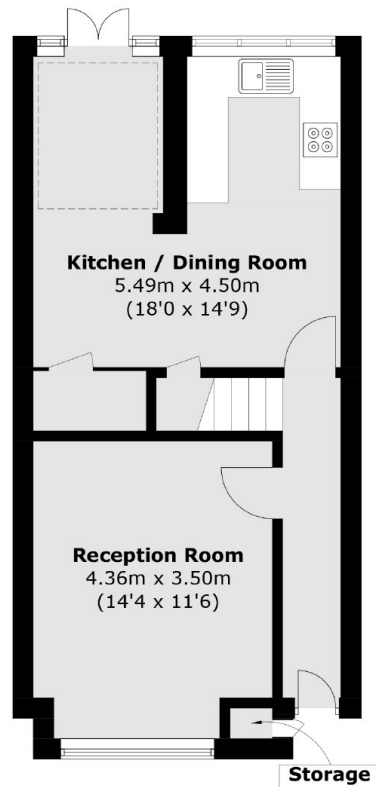
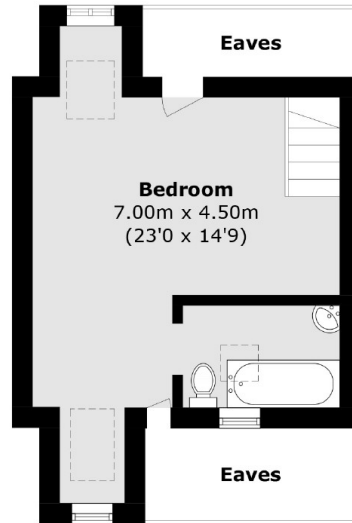
A modern three double bedroom, three bathroom house comes complete with a separate reception room, kitchen diner, wooden flooring, off-street parking and a garden featuring a raised decked terrace.

Conveniently located in a popular cul-de-sac positioned approx 0.6 of a mile Highgate tube station (Northern line) with acres of open green spaces nearby including Highgate Wood, Queens Wood and Hampstead Heath too. Highgate Primary School is just 0.2 miles away.

### Features

- Three Double Bedrooms
- Reception Room
- Kitchen Dining Room
- Three Bathrooms
- Garden
- Off-Street Parking

# Toyne Way, London, N6



## Ground Floor

## First Floor

Approx Internal Area: 107.6 sq. m (1,158.2 sq. ft)

External Storage: 0.3 sq. m (3.2 sq. ft)  
(Excluding Eaves)

# Dexters

Highgate  
35A Highgate High Street  
London  
N6 5JT

Sales  
020 8545 8584

Energy Rating: E. We aim to make our particulars both accurate and reliable. However they are not guaranteed; nor do they form part of an offer or contract. If you require clarification on any points then please contact us, especially if you're traveling some distance to view. Please note that appliances and heating systems have not been tested and therefore no warranties can be given as to their good working order.

 **RICS** | Regulated  
Estate Agent  
and Letting Agent

dexters.co.uk