



Milton Road, N6

£525,000

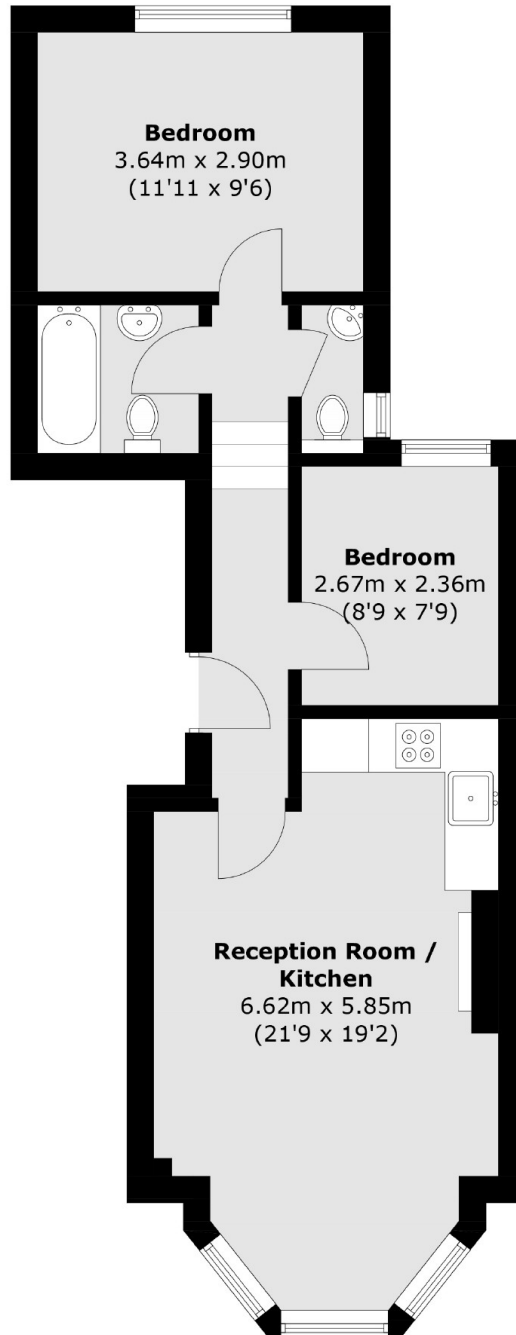
A two bedroom raised ground floor apartment with open plan kitchen and bay fronted reception room with high ceilings, converted from a handsome Edwardian house.

Located in the sought after "Miltons" enclave, the property is well placed for access to Parkland Walk, Highgate tube station and the amenities of Highgate Village and Crouch End.

Features

Period Conversion
Two Bedrooms
Bathroom
Feature Fireplace
Wooden Flooring
900+ Years Lease

Milton Road, London, N6



Total area (approx.): 49.0 sq. m (527.4 sq. ft)