



Hornsey Lane Gardens, N6

£325,000

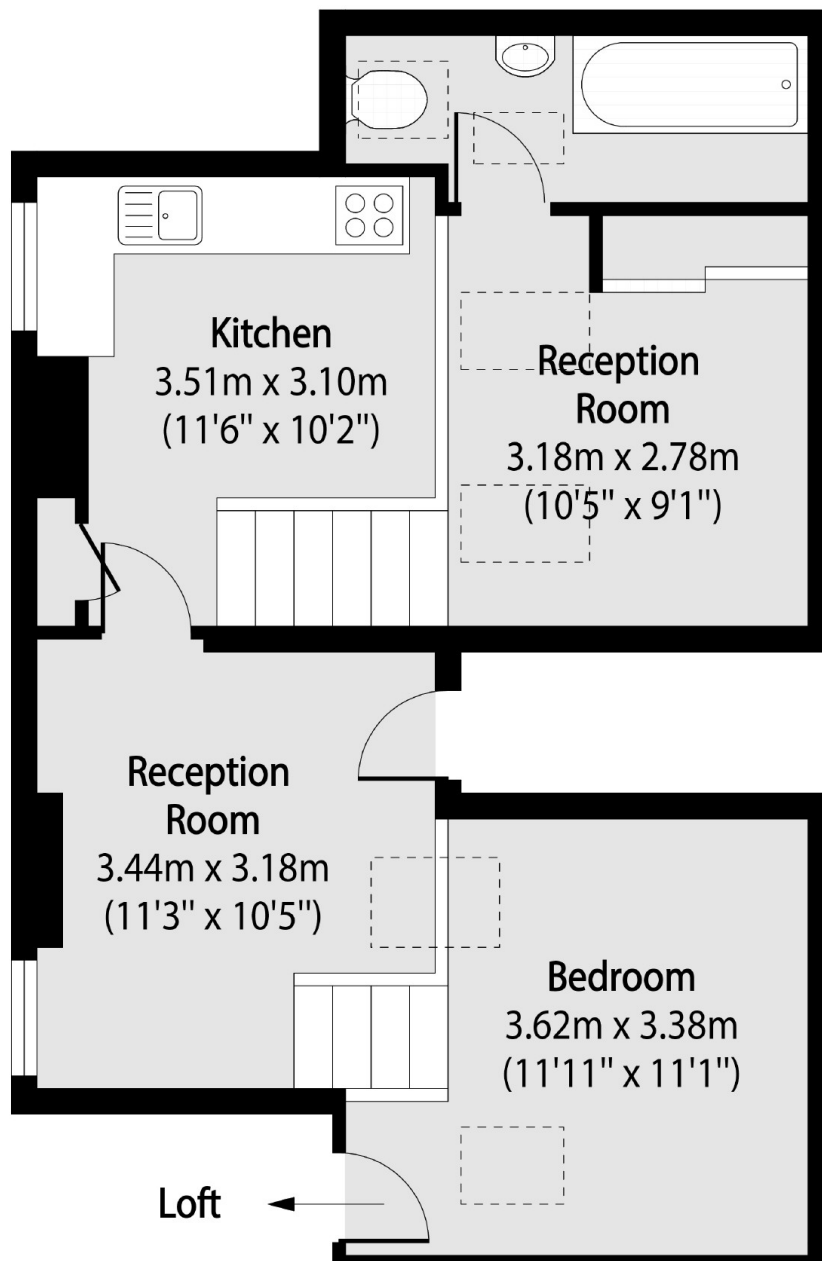
On the top floor of this Edwardian property, a converted studio/ one bedroom apartment with flexible accommodation, ideal as a first time purchase or rental investment.

Located in the sought after 'Miltons' enclave, the property is well positioned for Parkland Walk, Highgate Village and the Northern line underground station.

Features

- Bedroom
- Reception Room
- Kitchen
- Bathroom
- Storage
- Period Conversion

Hornsey Lane Gardens, London, N6



Total area (approx): 46.89 sq m (505 sq. ft)