



Ridgeway Gardens, N6

£5,700 Per calendar month

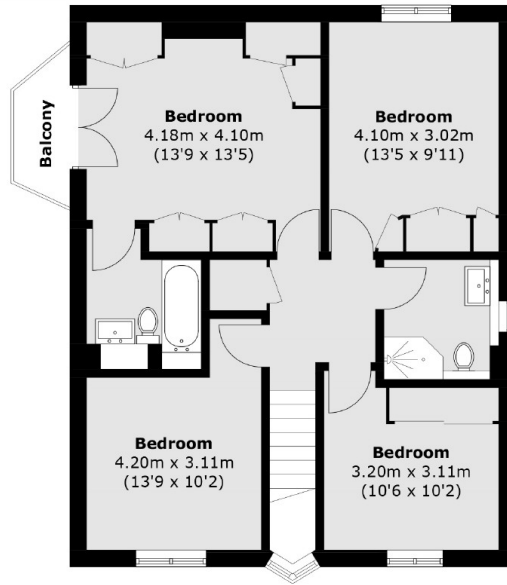
This charming semi detached family home is set over two floors in this sought after gated development. The house comprises four double bedrooms, front and rear reception rooms, separate kitchen and a private garden.

Located midway along Hornsey Lane, there is easy access to Highgate Village and Crouch End Broadway with their selections of shops, cafés and restaurants.

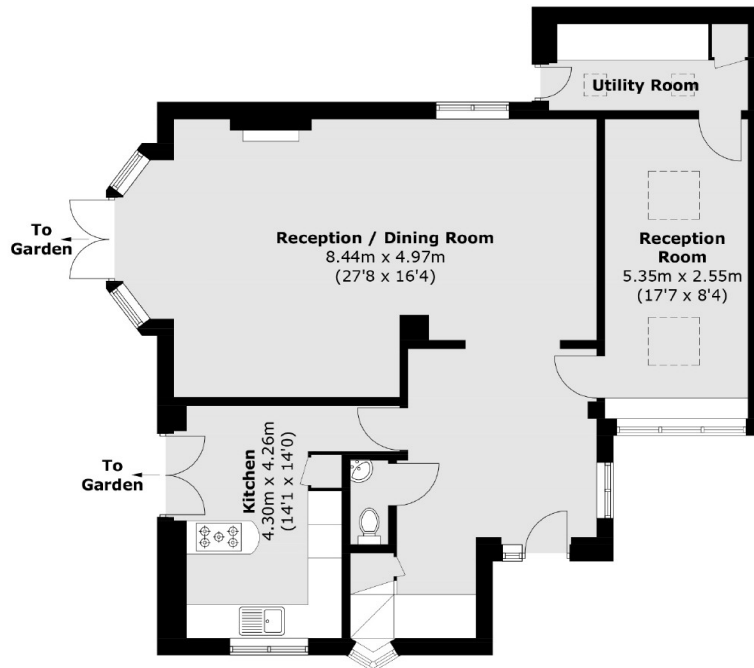
Features

- Semi Detached House
- Four Double Bedrooms
- Two Reception Rooms
- Off Street Parking
- Private Garden
- Gated Development

Ridgeway Gardens, London, N6



First Floor



Ground Floor

Total area (approx.): 158.7 sq. m (1,708.2 sq. ft)
Balcony: 2.3 sq. m (24.7 sq. ft)