



## Stanhope Road, N6

£550,000

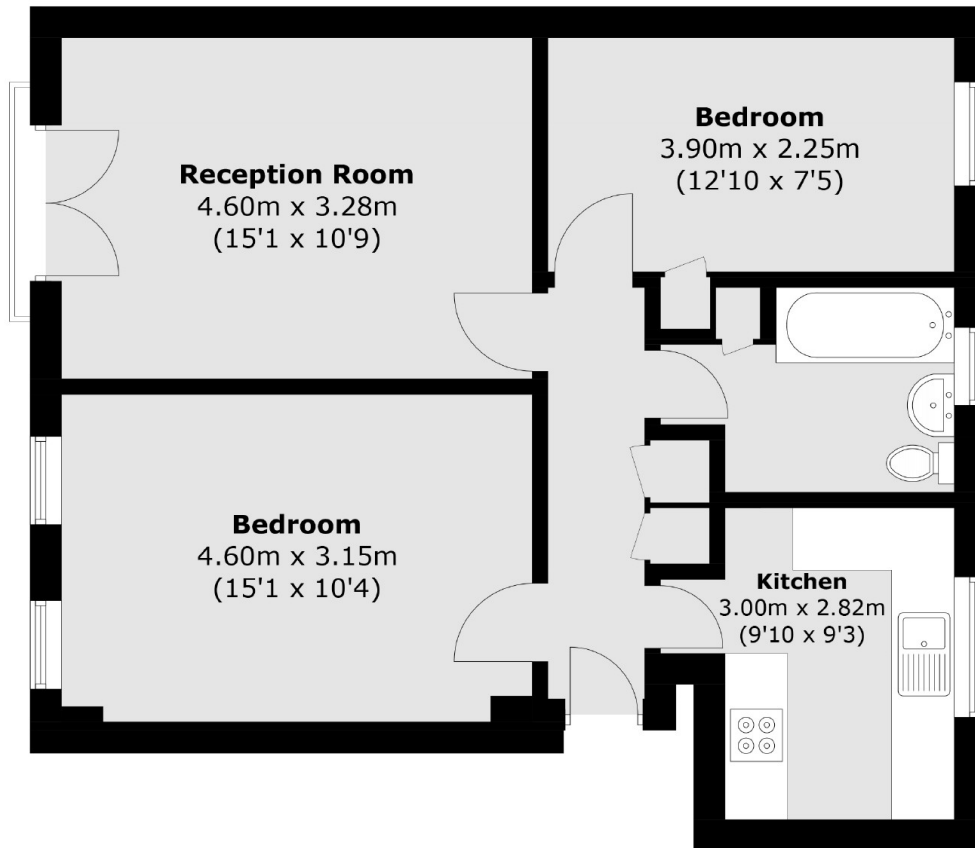
A delightful apartment on the first floor of this handsome Georgian style block retaining a number of original features including the polished parquet flooring.

Located towards the top of Stanhope Road, midway between Highgate Village and The Broadway. There is easy access to the local tube, bus routes and the delights of Parkland Walk.

### Features

- Two Double Bedrooms
- Reception Room
- Kitchen
- Bathroom
- Extensive Communal Gardens
- Garage and Parking

# Stanhope Road, London, N6



Total area (approx.): 58.0 sq. m (624.3 sq. ft)