



**Makepeace Avenue, N6**

**£2,100,000**

**Dexters**



## Makepeace Avenue, N6

A rarely available detached house with four bedrooms, a glorious 70ft rear garden and delightful views from the upper floors over the London skyline.

Providing a flexible layout, the house has been in the same ownership for approximately 25 years. Now requiring updating, this fine home presents the perfect opportunity to upgrade to one's own requirements.

With access to the local shopping, schools and transport, the vast area of Hampstead Heath along with Highgate Ponds is within easy reach.

Enviably positioned on the highly sought after Holly Lodge Estate and between the village, Swains Lane and the heath, houses of this nature are rare to the market.

### Features

- Four Bedrooms
- Two Reception Rooms
- Kitchen
- Potential For Enlargement
- Good Gardens
- Hampstead Heath





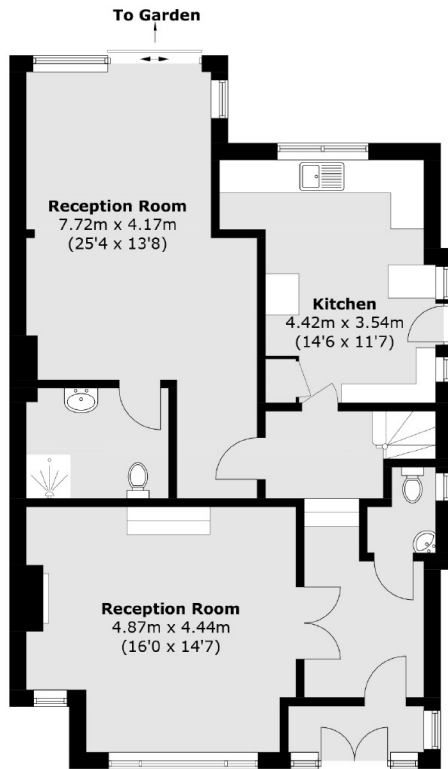




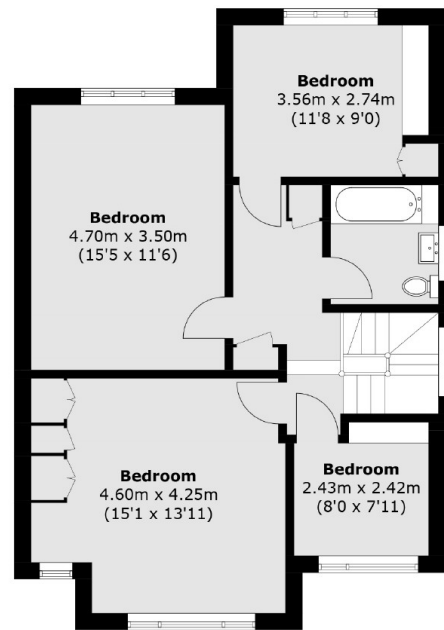




# Makepeace Avenue, London, N6



**Ground Floor**



**First Floor**

Total area (approx.): 151.0 sq. m (1625.4 sq. ft)  
(Including Void)