



Parklands, N6

£2,800 Per calendar month

A two bedroom top floor apartment in a private gated development. There is an open plan kitchen, spacious reception, two double bedrooms one with en-suite, family bathroom and off street parking.

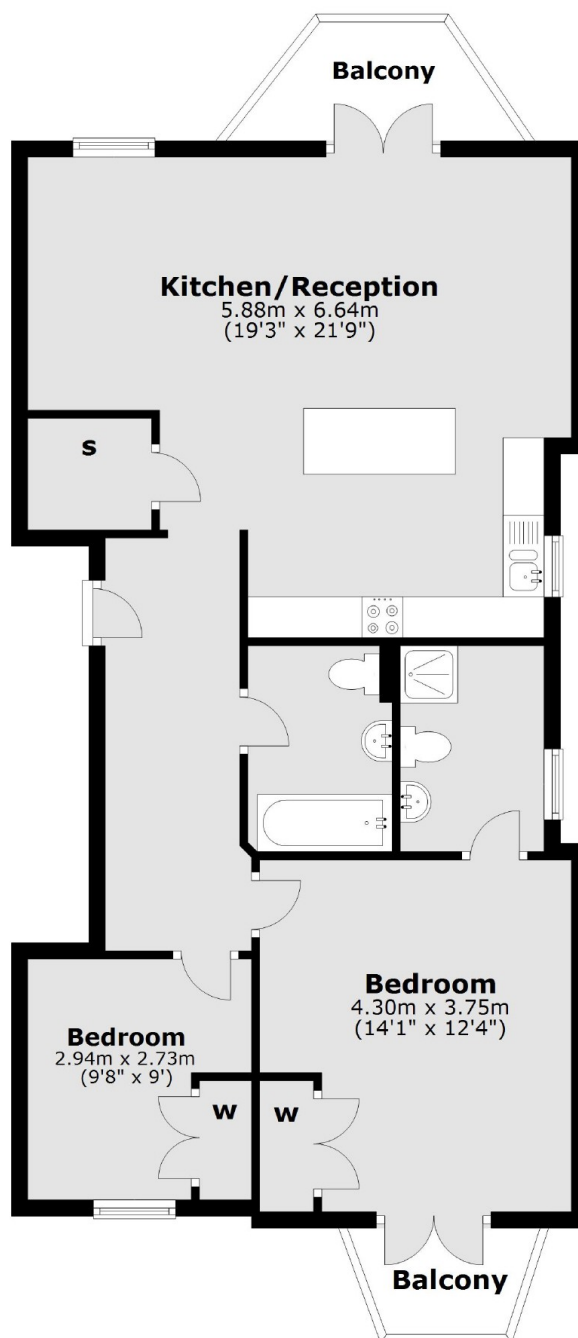
Located on Cholmeley Park moments from Highgate High Street which is great for its boutique shops, restaurants and pubs. Waterlow Park and Hampstead Heath are also nearby.

Features

- Two Double Bedrooms
- Two Bathrooms
- Two Balconies
- Top Floor
- Off Street Parking
- Great Location

Parklands, London, N6

Second Floor



Main area: Approx. 78.5 sq. metres (845.2 sq. feet)
Plus balconies, approx. 6.8 sq. metres (73.6 sq. feet)