



Shepherds Hill, N6

£675,000

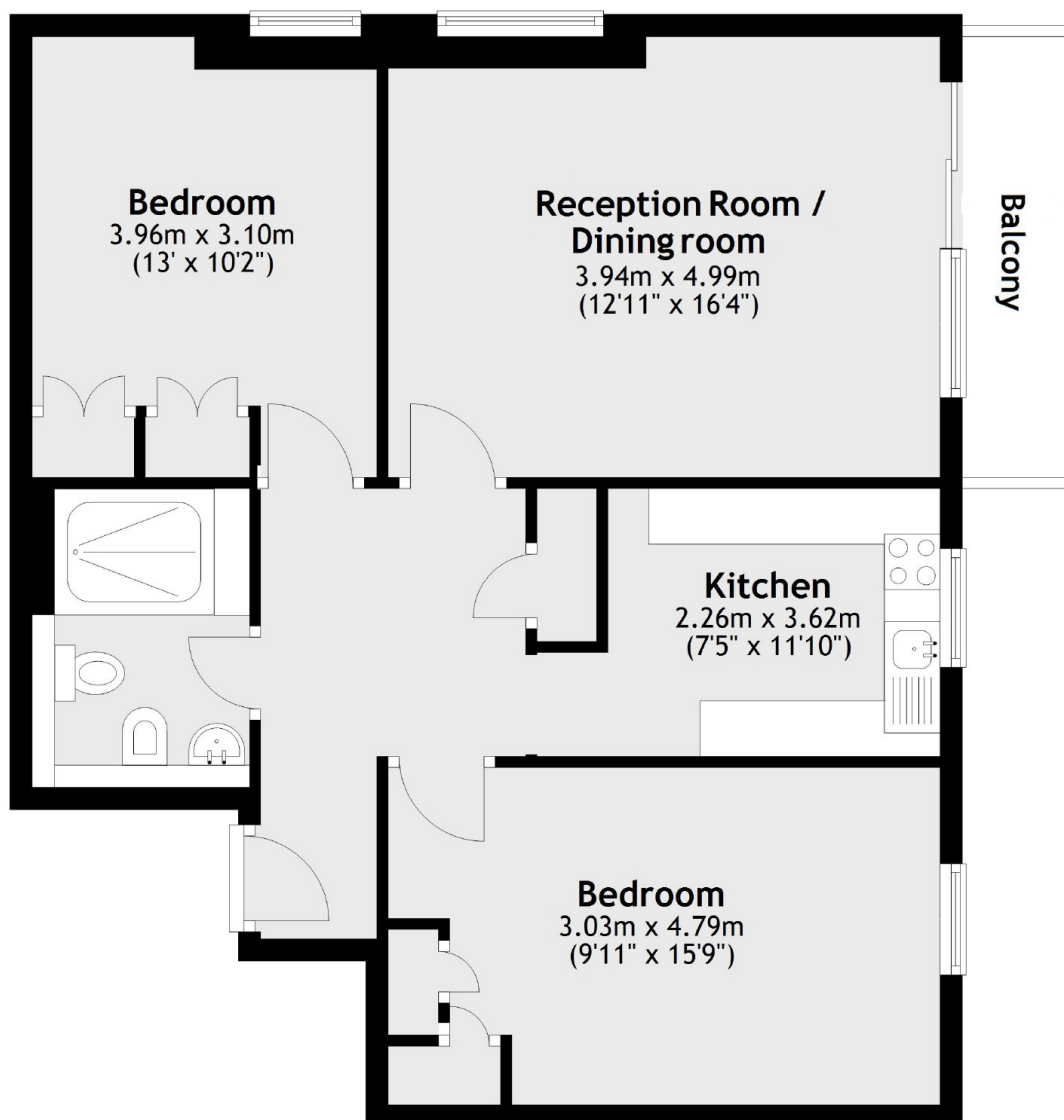
On the upper floors of this sought after block and with far reaching views towards Muswell Hill, a superb apartment with a balcony which overlooks the communal gardens.

Positioned in this popular road close to Highgate Northern line tube, woodlands and a local park. The shops, restaurants and vibrant community of Crouch End are less than half a mile away.

Features

- Two Double Bedrooms
- Double Aspect Reception
- Kitchen
- Modern Shower Room
- Passenger Lift
- Garage

Shepherds Hill, London, N6



Main area: Approx. 70.7 sq. metres (760.7 sq. feet)
Plus balconies, approx. 4.0 sq. metres (43.6 sq. feet)