



Hornsey Lane, N6

£270,000

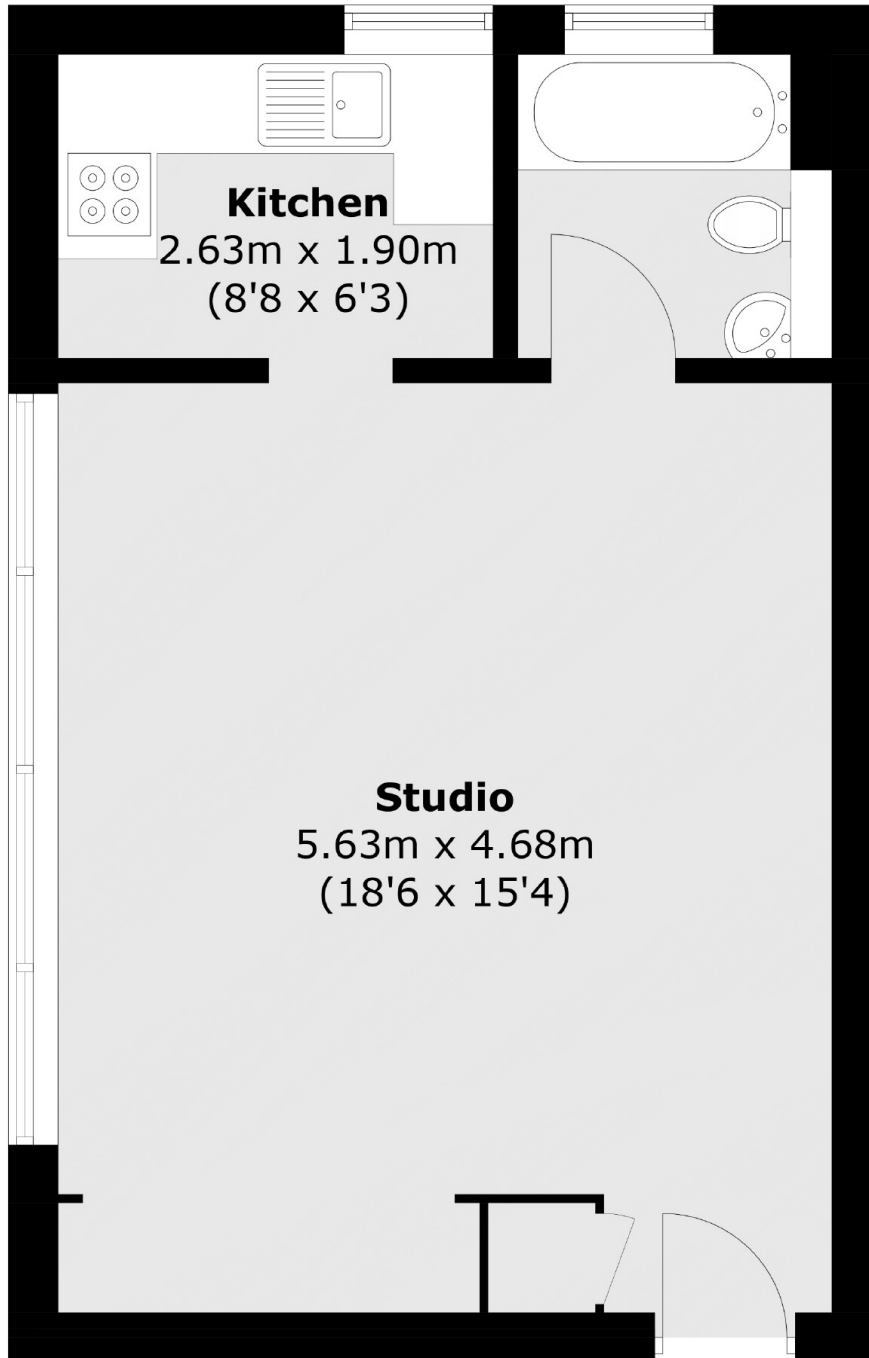
A fourth floor studio apartment with rear facing views over large communal gardens in this popular purpose built block with the advantage of a passenger lift access.

Located towards Crouch Hill and therefore convenient for The Broadway with its selection of shops and restaurants, Highgate Village along with Waterlow Park are at the end of the road.

Features

- Rear Facing
- Studio Room
- Bathroom
- Separate Kitchen
- Communal Gardens
- Passenger Lift

Hornsey Lane, London, N6



Total area (approx.): 35.8 sq. m (385.3 sq. ft)