



Cromwell Avenue, N6

£400,000

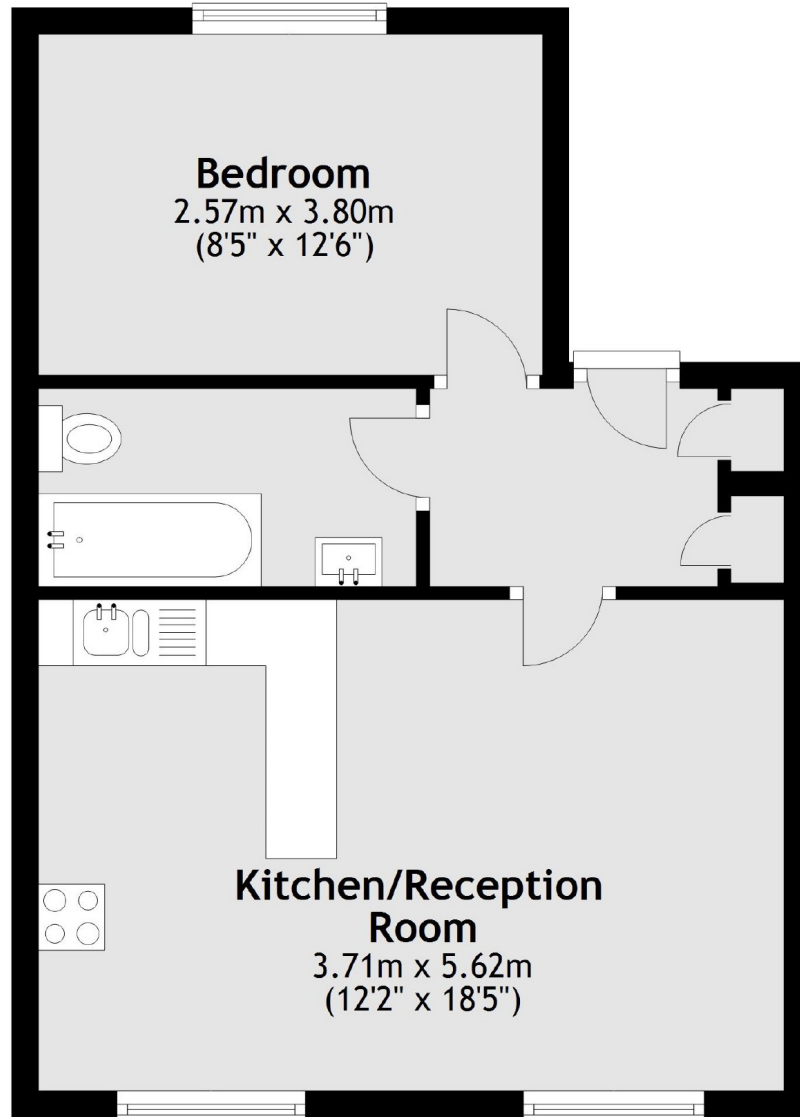
Converted from a Victorian house in this popular location between the transport connections and Highgate Village, this charming apartment has scope to update.

Well positioned within half a mile of Highgate Northern Line underground and Parkland Walk, The property benefits from large sash windows and loft storage.

Features

- Double Bedroom
- Bathroom
- Reception Room
- Open Plan Kitchen
- Loft Storage
- Share of Freehold

Cromwell Avenue, London, N6



Total area: approx. 39.9 sq. metres (429.8 sq. feet)