



Shepherds Hill, N6

£2,400 Per calendar month

A two double bedroom apartment set on the second floor of this purpose built block with a lift. There is a spacious reception room leading to a private balcony, separate kitchen and a garage.

Highgate and Crouch End are leafy residential areas which have a variety of restaurants, pubs, supermarkets and local independent shops and easy access to central London.

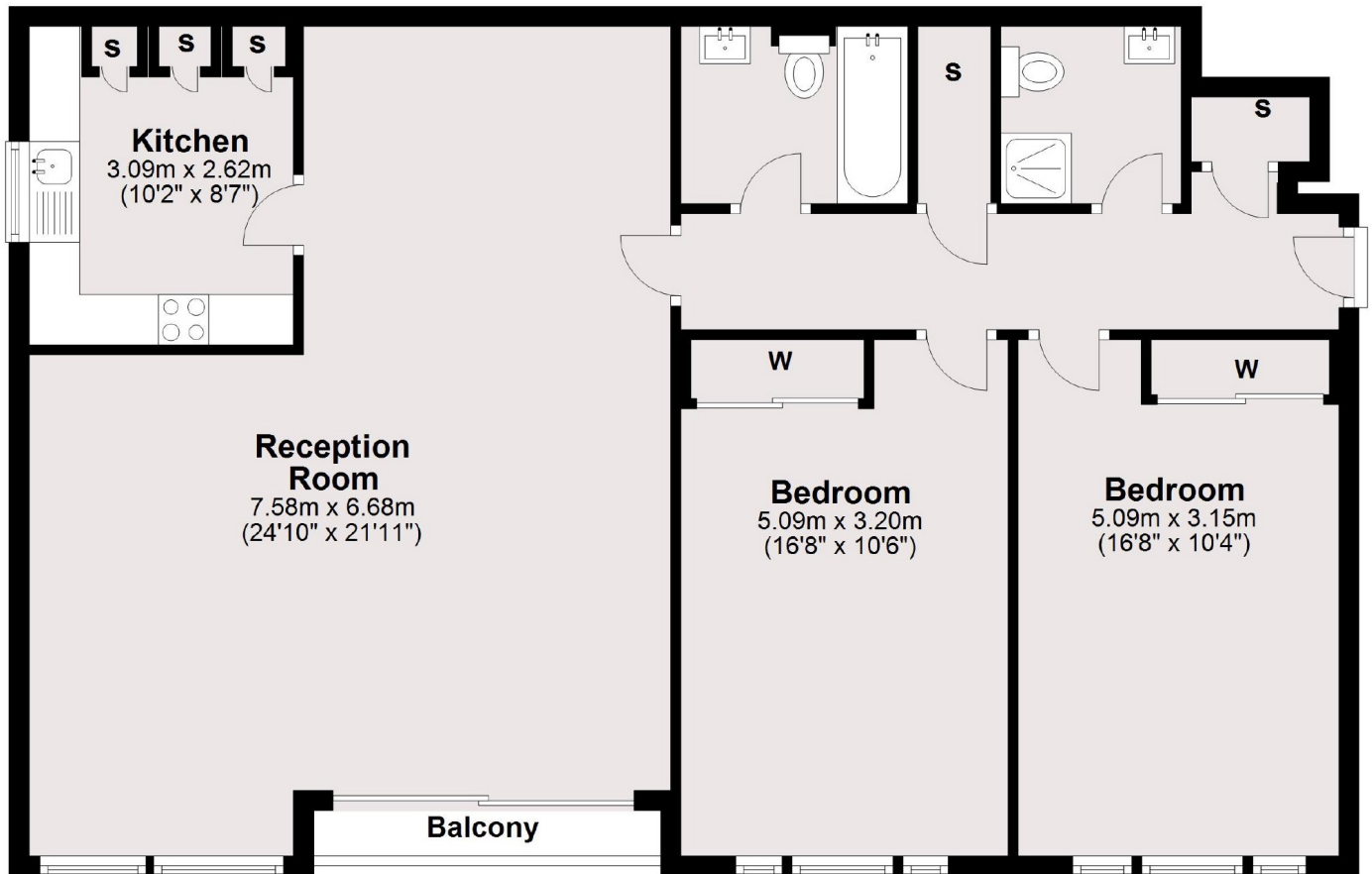
Features

- Two Double Bedrooms
- Spacious Apartment
- Second Floor (With Lift)
- Private Balcony
- Two Bathrooms
- Modern Kitchen

Shepherds Hill, London, N6

Third Floor

Main area: approx. 102.6 sq. metres (1104.2 sq. feet)
Plus balconies, approx. 2.0 sq. metres (21.5 sq. feet)



Main area: Approx. 102.6 sq. metres (1104.2 sq. feet)
Plus balconies, approx. 2.0 sq. metres (21.5 sq. feet)