



**Highgate West Hill, N6**

**£2,795,000**

**Dexters**





## Highgate West Hill, N6

A detached family house forming part of the Holly Lodge Estate and located moments from Hampstead Heath and the eclectic Swains Lane shopping and restaurants.

With an impressive entrance hallway, there are two large reception rooms, kitchen breakfast room and guest WC on the ground floor.

The first floor has four generous bedrooms, family bathroom and an en suite shower room. In addition there is a large loft space with potential for development.

Externally the house is set behind a deep front garden and has a mature and secluded rear garden.

Positioned towards the foot of Highgate West Hill there are good transport connections and a number of local schools nearby. The bathing ponds on the heath are 0.1 of a mile away.

### Features

- Four Bedrooms
- Two Bathrooms
- Two Reception Rooms
- Mature Gardens
- Scope For Enlargement
- Character Home







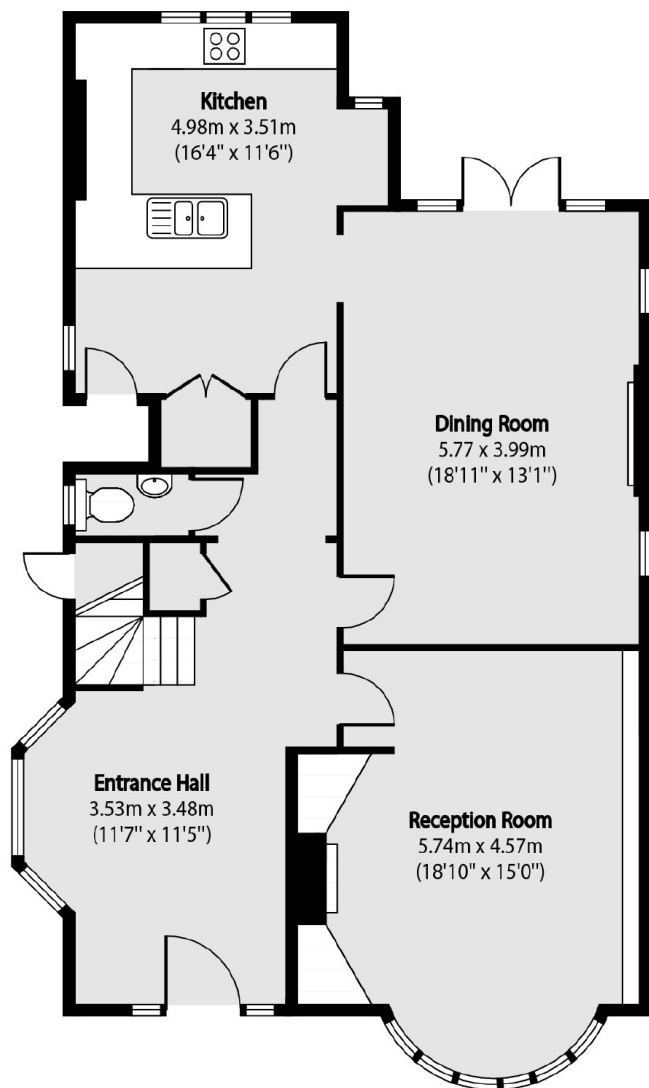




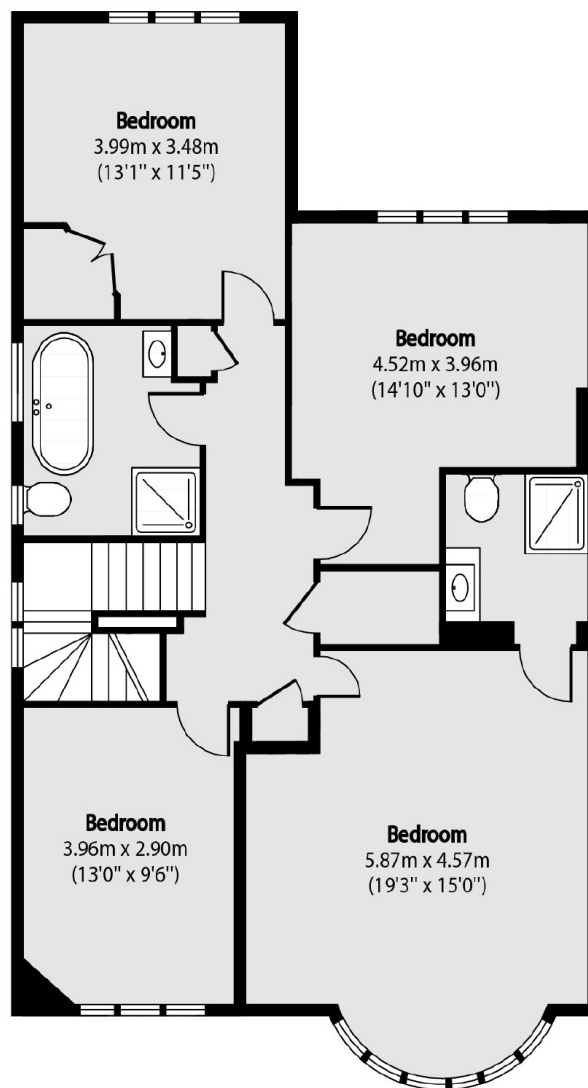




# Highgate West Hill, London, N6



Ground Floor



First Floor

Total area (approx): 181.81 sq m (1957 sq. ft)