



Hornsey Lane Gardens, N6

£1,900,000

Dexters



Hornsey Lane Gardens, N6

In a popular turning, set back and elevated from the road within easy access of Parkland Walk. A semi-detached family house offering a superb entertaining patio area and garden.

With a generous welcoming entrance hallway, there is a guest WC, access to the integral garage, a wide double reception room and a kitchen breakfast room, both with access to the rear garden.

On the upper floors, a spacious principal bedroom with dressing area and en suite, family bathroom and three further bedrooms.

Externally, there is off-street parking to the front and a large rear garden and patio, ideal for entertaining and perfect for summer evenings.

In this sought after enclave, the house is well placed for access to local schools, Waterlow Park, transport connections and both Highgate and Crouch End shopping facilities.

Features

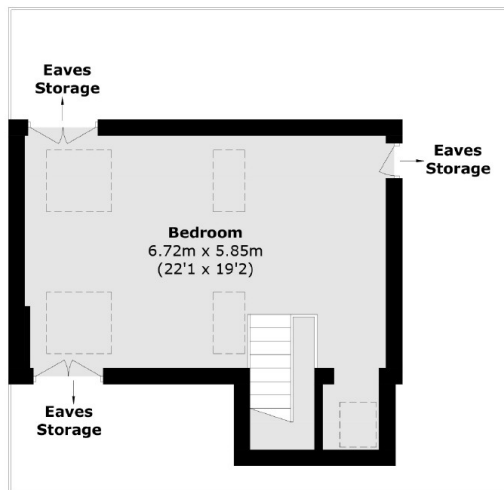
- Four Bedrooms
- Two Bathrooms
- Dressing Room
- Double Reception Room
- Large Garden
- Garage and Parking



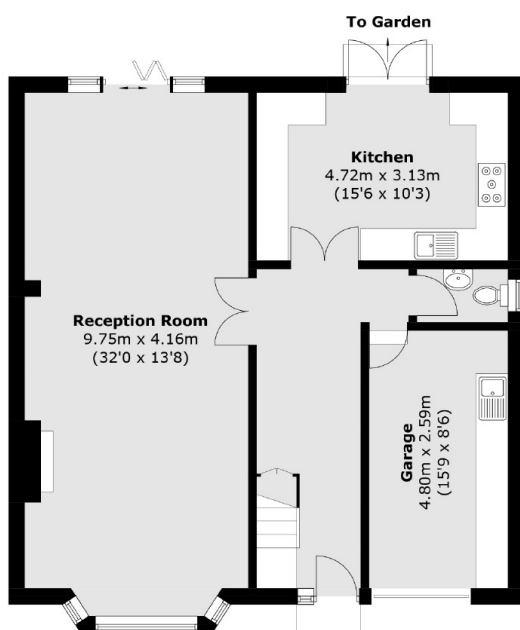




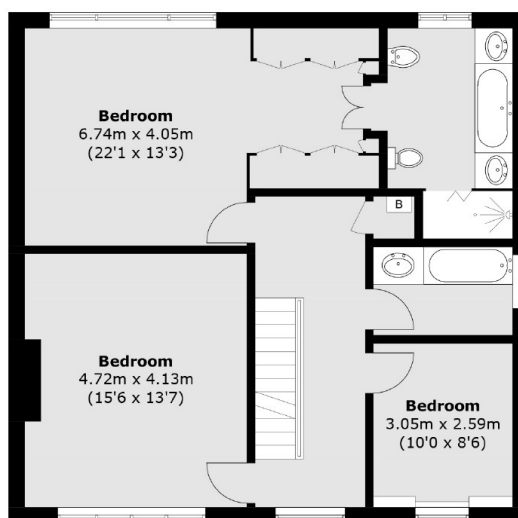
Hornsey Lane Gardens, London, N6



Second Floor



Ground Floor



First Floor

Total area (approx.): 198.9 sq. m (2141.0 sq. ft)
(Excluding Eaves Storage)