



Southwood Lane, N6

£1,150,000

Retaining a plethora of original period embellishments, a delightful and spacious apartment within a fine Edwardian red-brick mansion block moments from Highgate tube.

Conveniently placed, moments from Highgate tube and the local woodlands, the amenities of Highgate Village can be found at the end of Southwood Lane.

Features

- Two Bedrooms
- Double Reception Room
- Kitchen
- Bathroom
- Dining Room
- Balcony

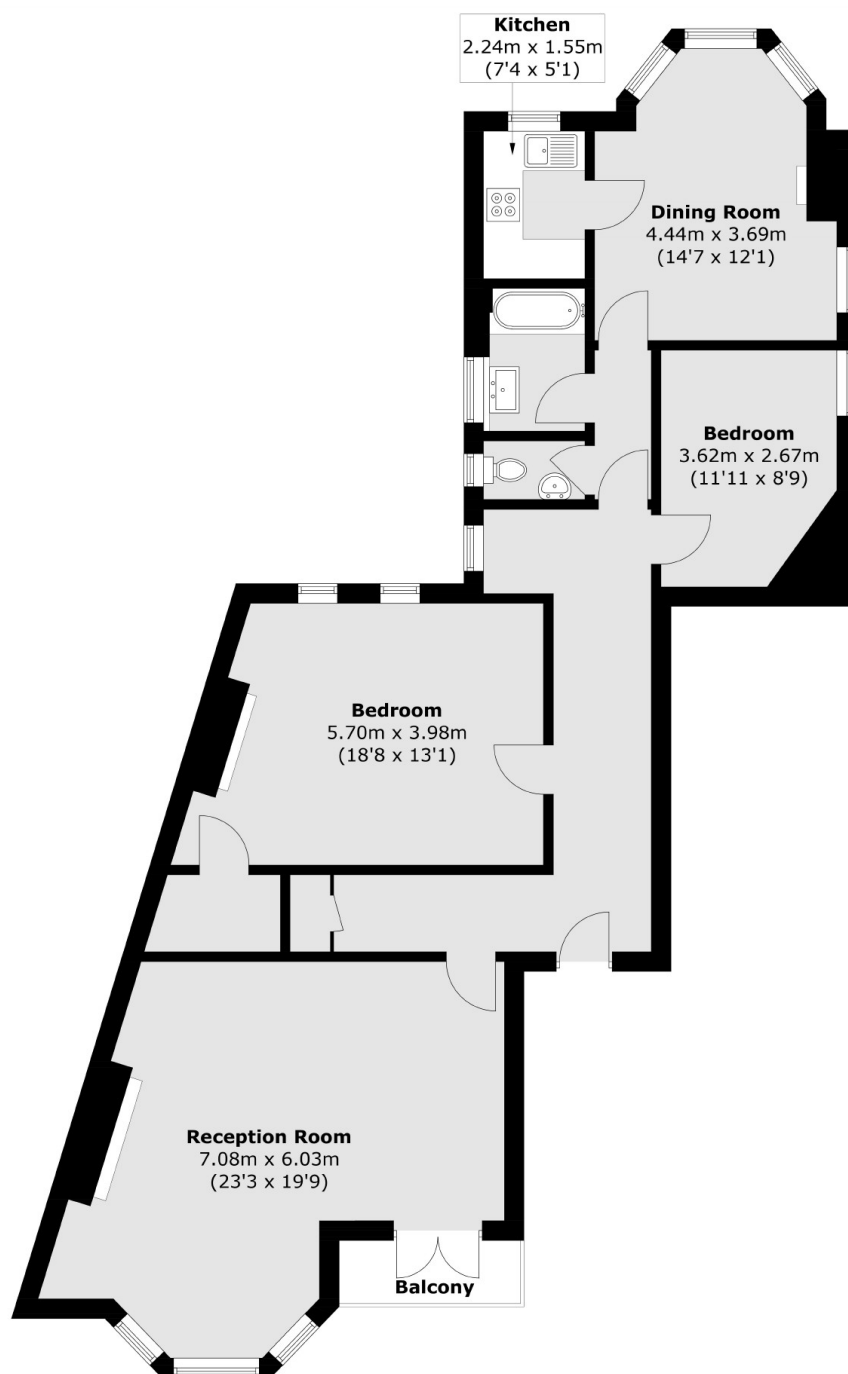


Southwood Lane, N6

This impressive home retains warmth and character of a bygone era and has high ceilings with ornate plasterwork, exposed timber flooring, large sash windows and original fireplaces.



Southwood Lane, London, N6



Total area (approx.): 109.1 sq. m (1,174.3 sq. ft)
Balcony: 2.6 sq. m (28.0 sq. ft)