



## Milton Park, N6

£2,150 Per calendar month

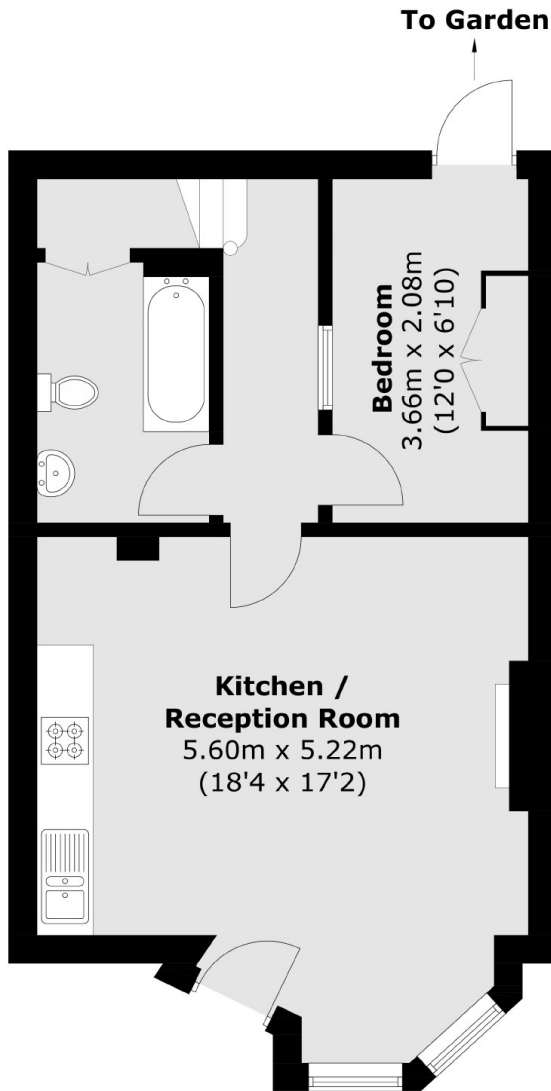
A two bedroom apartment set on the ground floor of a period conversion. There is a open plan reception/kitchen area with wooden floors, a double and single bedroom leading directly onto the private garden.

Milton Road is a highly popular location and in reach of the Parkland Walk environmental trail and Highgate Village with its selection of shops and café culture.

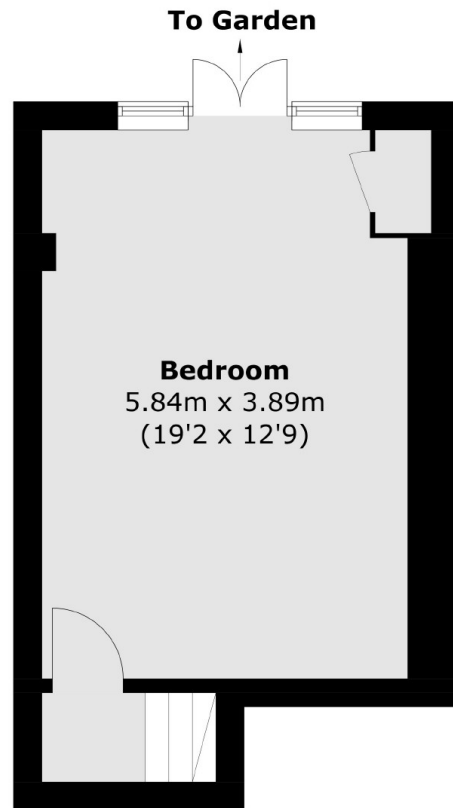
### Features

- Ground Floor
- Two Bedrooms
- Private Garden
- Open Plan Kitchen
- Newly Decorated
- Period Conversion

Milton Park,  
London, N6



**Lower Ground Floor**



**Ground Floor**

Total area (approx.): 70.5 sq. m (758.8 sq. ft)