



Avenue Road, N6

£725,000

Dexters



Avenue Road, N6

An impressive upper duplex apartment carved from this handsome red-brick Edwardian building with delightful and verdant rear views over Coolhurst tennis club.

This spacious property with over 1,000 sq ft of accommodation, has a recently fitted modern kitchen, two good size bedrooms and a large reception room with rear views along with a delightful dining area set on a raised dais.

Avenue Road is perfectly placed for both access to Crouch End Broadway with its collection of shops and restaurants, The Parkland Walk and Highgate underground station is within less than a mile.

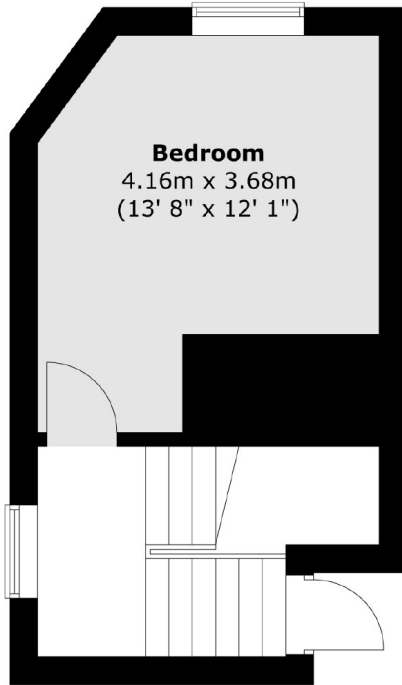
Features

- Two Bedrooms
- Modern Fitted Kitchen
- Family Bathroom
- Spacious Reception Room
- High Ceilings
- Share of Freehold



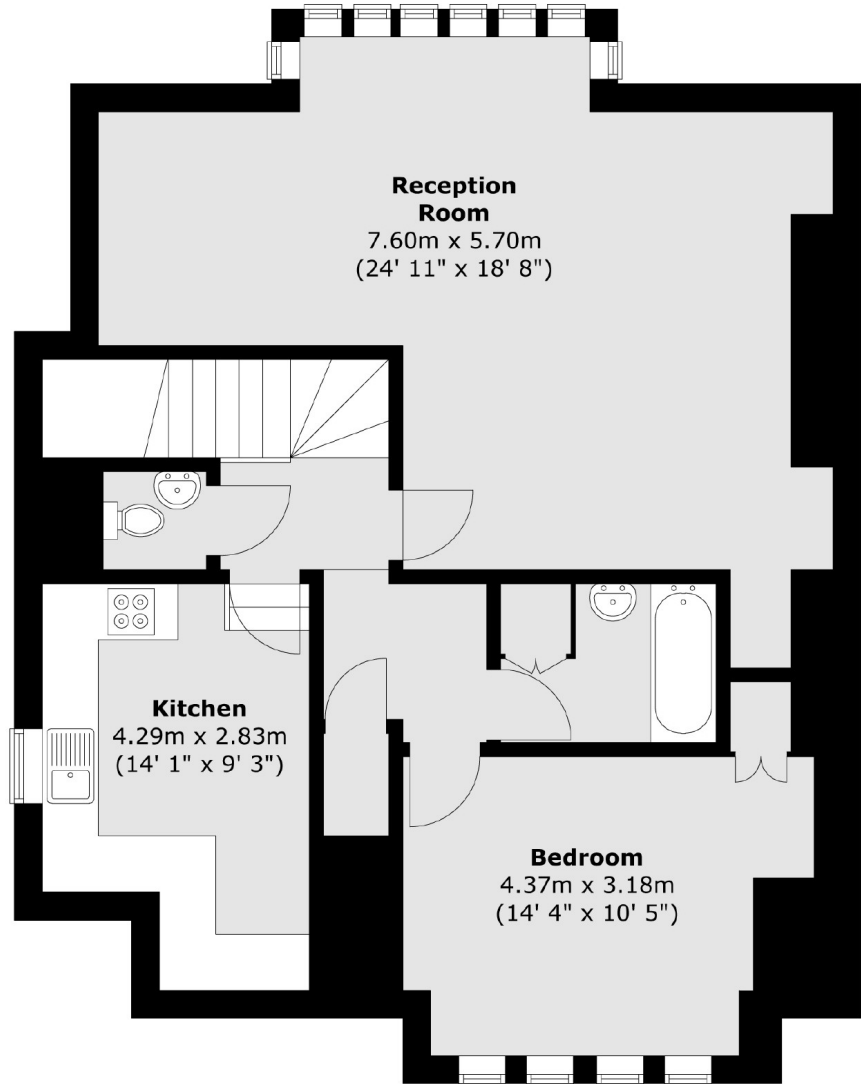
Avenue Road, London, N6

First Floor



Bedroom
4.16m x 3.68m
(13' 8" x 12' 1")

Second Floor



Reception Room
7.60m x 5.70m
(24' 11" x 18' 8")

Kitchen
4.29m x 2.83m
(14' 1" x 9' 3")

Bedroom
4.37m x 3.18m
(14' 4" x 10' 5")

Total area (approx.) : 104.1 sq. m (1120 sq. ft)