



Cromwell Avenue, N6

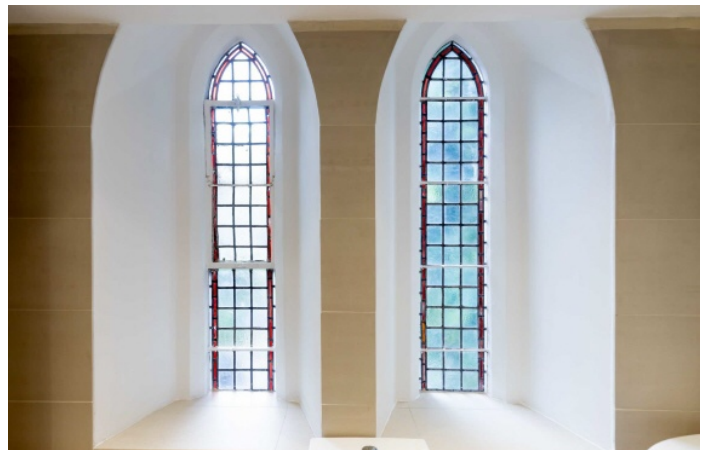
£700,000

A delightful first floor apartment with wooden flooring and new carpets, forming part of this magnificent church conversion close to Waterlow Park and moments from the village.

Cloisters Court is on the corner of Cromwell Avenue and therefore convenient to the local shopping, restaurants, Waterlow Park and both Highgate and Archway tube stations.

Features

- Two Bedrooms
- En Suite Shower Room
- Bathroom
- Kitchen
- Open Plan Reception
- Stained Glass Windows



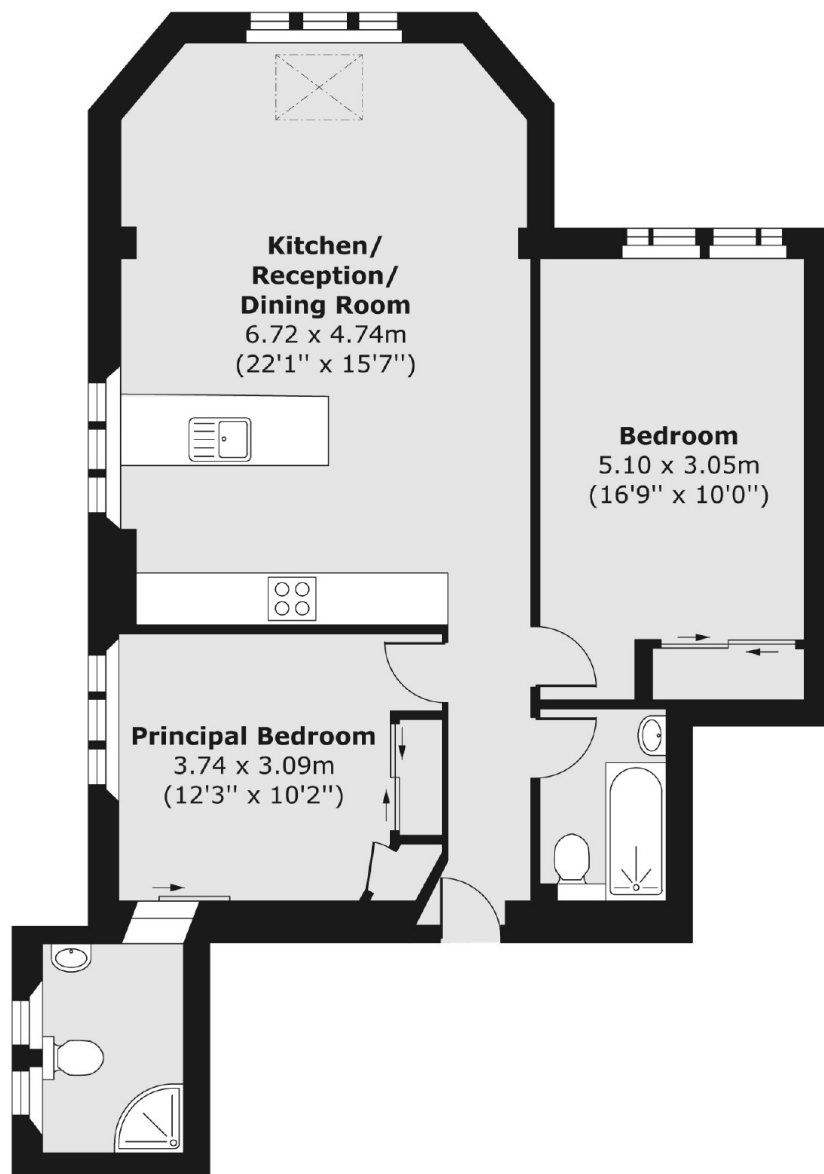
Cromwell Avenue, N6

With an abundance of character this unique flat has a number of period features including stained glass windows, a large dual aspect reception with open plan kitchen area, modern bathroom and an en suite shower room.



Cromwell Avenue, London, N6

First Floor



Total area (approx.) 70.58 sq. m (760 sq. ft)