



Ridgeway Gardens, N6

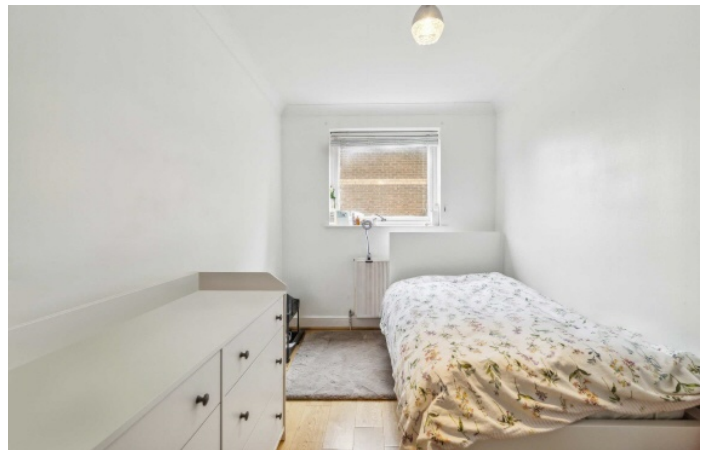
£799,500

A spacious two bedroom apartment in this smart gated development with on-site parking, passenger lift and communal leisure complex including heated swimming pool.

Located midway along Hornsey Lane, there is easy access to Highgate Village and Crouch End Broadway with their selections of shops , restaurants and schooling.

Features

- Two Bedroom
- Two Bathrooms
- Large Reception
- Open Plan Kitchen
- Two Balconies
- Communal Leisure Complex



Ridgeway Gardens, N6

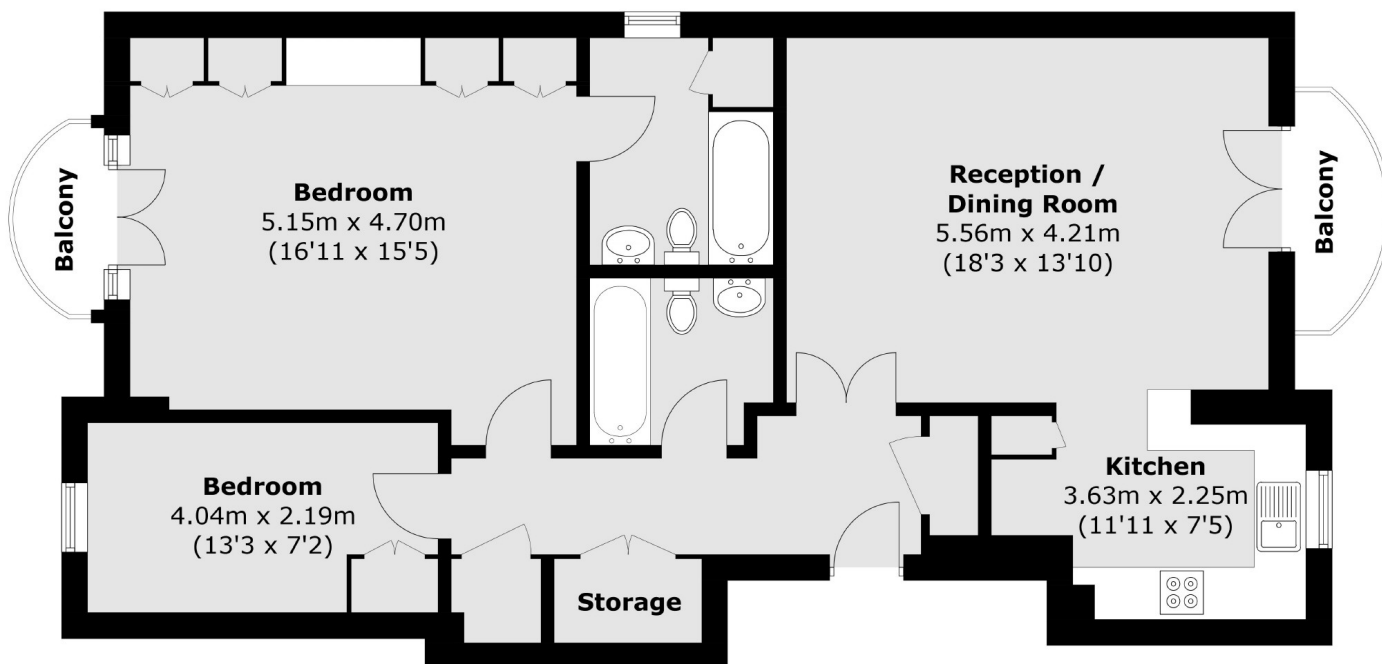
With a delightful modern interior, there is lift access to the first floor, wooden flooring to the principle rooms and a modern fitted kitchen open to the reception which has a balcony.

The main bedroom has the advantage of an en suite bathroom and balcony and there is a second bedroom and family bathroom located off the hallway.

Externally there is off street parking to the front of the building and a well presented leisure complex with heated swimming pool on the lower floor.



Ridgeway Gardens, London, N6



Total area (approx.): 87.6 sq. m (942.9 sq. ft)
Balcony (approx.): 4.2 sq. m (45.2 sq. ft)