



**The Park, N6**

£950,000

**Dexters**



## The Park, N6

A delightful top floor apartment within this handsome Victorian building with a generous reception room, far reaching views and flexible accommodation.

Accessed from the first floor, there is a good sized double bedroom with an en suite bathroom. On the upper floors are two further bedrooms, a family bathroom, a kitchen/breakfast room and a large double reception with a pitched ceiling.

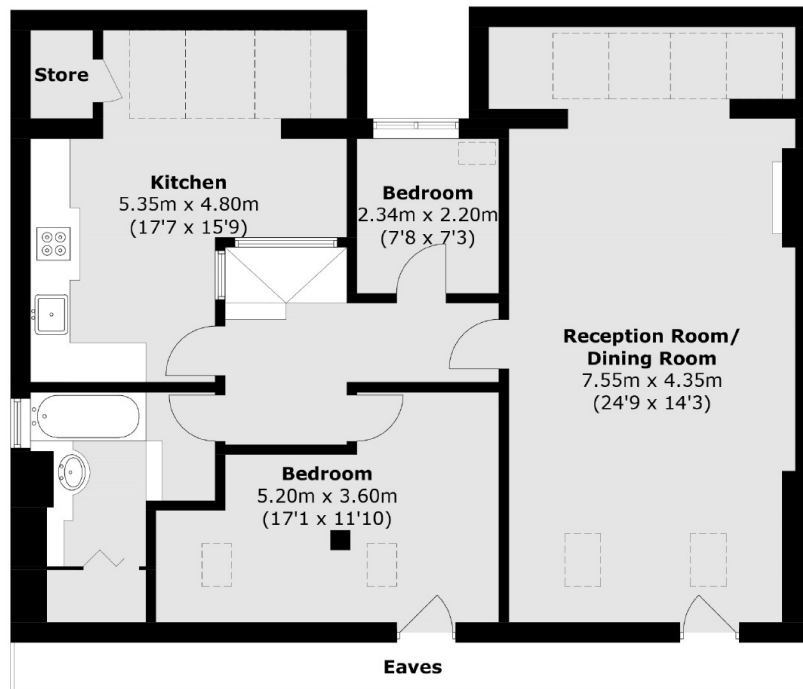
Perfectly place just a short walk to Highgate tube station and the local woodlands, the amenities of the village can be reached at the top of Southwood Lane.

### Features

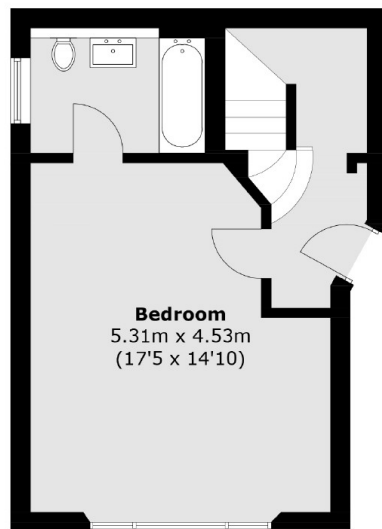
- Three Bedrooms
- Two Bathrooms
- Large Reception Room
- Kitchen
- Character Building
- Close to Tube



# The Park, London, N6



**Second Floor**



**First Floor**

Total area (approx.): 136.1 sq. m (1,464.9 sq. ft)  
(Excluding Eaves)